



# THE CANAL QUARTERLY

WWW.CANALTRUST.ORG

## C&O CANAL TRUST CELEBRATES 15TH ANNIVERSARY

We are pleased to be celebrating our 15th anniversary as the official nonprofit partner of the C&O Canal National Historical Park (NHP) this year. This milestone anniversary provided us with an opportunity to review some of the highlights of our work for the Park—none of which would have been possible without the support of our dedicated donors and volunteers. As we celebrate, we want to thank you for your continued commitment to preserving and protecting the Park for future generations.

Three years ago, we never could have predicted how a global pandemic would change the way many of us live, work, and recreate. The C&O Canal NHP, which entered the pandemic with a \$259 million maintenance backlog, has had a substantial increase in its use. When many public places closed their doors, people sought a safe and

enjoyable place to recreate and enjoy nature. The canal became a place of peace and restoration for more than five million people in 2021.

This year we were able to enjoy the return of many in-person events. Our volunteer numbers were closer to those we had pre-pandemic, Canal For All programming expanded, and we were able to hold Park After Dark.

Even as public places have re-opened, the Park remains a popular outdoor space for visitors and recreators. Surging visitation, increased regional urbanization, and climate change will all impact the C&O Canal NHP in the coming years. We hope you'll join us

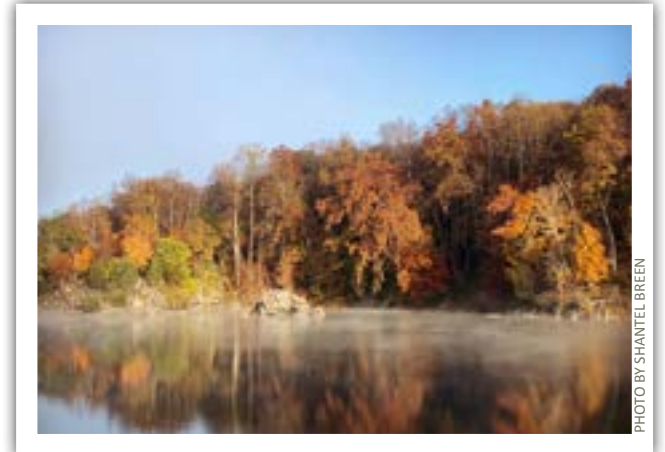


PHOTO BY SHANTEL BREEN

in the face of these challenges as we look to make a difference in the next 15 years. Join us today: [www.CanalTrust.org/Support](http://www.CanalTrust.org/Support).

*See 15 Year Accomplishments Infographic on page 5*

## PARK AFTER DARK RETURNS, RAISING MORE THAN \$223,000 FOR THE C&O CANAL NHP

The C&O Canal Trust welcomed nearly 150 guests to the Historic Great Falls Tavern on September 17 for its largest fundraising

event of the year, Park After Dark. The event raised more than \$223,000 for the C&O Canal NHP—surpassing the Trust's fundraising goals and previous Park After Dark events. Of the funds raised at the event, \$55,000 will directly support the Park's work to preserve and protect rare, threatened, and endangered plants.

In addition to celebrating the return of Park After Dark for the first time

since 2019, the Trust celebrated its 15th anniversary. Special guests included Park leadership, representatives from Senators Chris Van Hollen and Ben Cardin's offices, Maryland State Delegate Marc Korman, and Eva the Canal mule.

The William O. Douglas Stewardship Award was presented at Park After Dark to longtime supporters of the Trust and Park, Daofeng and Angela He and the Daofeng & Angela Foundation. Their deep commitment to preserving the park and sharing its history with visitors, now and into the future, continues to be an

*"Park After Dark" continues on page 5*



PHOTO BY TURNER PHOTOGRAPHY

*Park After Dark attendees enjoyed a beautiful evening at Great Falls.*

## BOARD OF DIRECTORS

CHAIR John S. Guttmann  
VICE CHAIR Francis Grant-Suttie  
TREASURER Bert Swain  
SECRETARY Anthony Stacy  
Gay Barclay  
Paul Bremer  
Steve Chaudet  
Sherif Etefa  
Mary Ann Fisher  
Sandy Grace  
Marc Grossman  
Paul Juola  
Paul B. Krogh  
Robert Mertz  
Bill Newman  
Dan Spedden  
Jonathan Warner  
Cory Van Horn  
Robin Zanotti, ACFRE

## STAFF

PRESIDENT & CEO  
Robin Zanotti, ACFRE  
DIRECTOR OF PROGRAMS & PARTNERSHIPS  
Aidan Barnes  
DIRECTOR OF MARKETING & COMMUNICATIONS  
Charissa Hipp  
DIRECTOR OF DEVELOPMENT  
Lauren Riviello  
OFFICE ADMINISTRATOR  
Jane Neff  
DEVELOPMENT ASSOCIATE  
Tymber Compher  
PROGRAM STAFF  
Jacob Rockwell  
Don Street

## A NOTE FROM THE PRESIDENT

The C&O Canal Trust celebrates its 15th anniversary this year. I've been honored to lead the organization for about half of those 15 years. From my unique perspective I can tell you with certainty that our growth and success have been made possible by donors who care deeply about the park and have entrusted us with their gifts. Your support funds the Trust's work to preserve and protect the park.

In this issue of the Canal Quarterly we recognize and thank donors during our most recent fiscal year. More specifically, this issue also outlines the impact of your support. As one who joins you in caring deeply about the park, you have my most sincere appreciation!

It was wonderful to be able to host 150 Park After Dark guests at Great Falls this past September! It provided a sense of normalcy despite choosing to reduce the number of guests as a nod to COVID-19. Perhaps next year COVID won't need to be such a major consideration in Park After Dark planning. Nonetheless, it was a wonderful event and very successful

financially. Thanks to all who were able to participate.

I've been preparing to end my tenure with the C&O Canal Trust with my retirement in early 2023. Over the last few months as I've approached a task or problem that I've always thought required my perspective and skill set, the thought has often occurred to me, "Well, I guess they'll figure out how to do that without me." The more I think about it, the happier it makes me. Together, we've built a strong organization that will withstand a change in leadership. Your support of my successor will be just as important as it has been during my tenure.

Robin Zanotti, Trust President & CEO



PHOTO BY PAUL GRAUNKE

Have you sought recreation and refuge along the C&O Canal throughout the past year? Please show your gratitude by investing in the preservation of the Park with a gift to the C&O Canal Trust. Your support is vital to ensuring that future generations experience a beautiful, safe, and welcoming C&O Canal NHP. Give online at [www.CanalTrust.org/GIVE](http://www.CanalTrust.org/GIVE) or donate by check by returning the enclosed envelope.

Do you work for the federal government? Be sure to include the C&O Canal Trust in your Combined Federal Campaign workplace giving. It's an easy way to give back to the park that gives so much to you! Our CFC number is 98180. Please note, we are in the Chesapeake Bay area.

## CANAL COMMUNITY DAYS

Canal Community Days is the C&O Canal Trust's annual volunteer program. Each year, we recruit and manage volunteers to undertake a range of preservation, beautification, maintenance, and conservation projects along the 184.5 mile length of the C&O Canal NHP, working closely with the National Park Service to identify priorities that can be completed by volunteers of all ages.

Canal Community Days began last spring with our annual kickoff event at Great

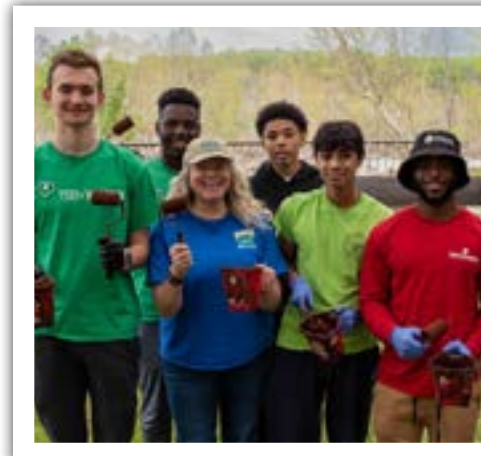


PHOTO BY FRANCIS GRANT-SUTTIE



PHOTO BY FRANCIS GRANT-SUTTIE

Falls, and was followed by an event in Williamsport. Additional events were held this fall in Allegany County and Frederick County. The Trust also hosted numerous clean-up events for corporate groups, school groups, scouts and more throughout the year.

Thank you, volunteers, for providing vital support in high visitor use areas! Your willingness to lend a helping hand and help make this Park shine is invaluable! Be on the lookout for forthcoming information about events in 2023.

## 68 MILES OF TOWPATH RESURFACED

Canal users walking and biking along the towpath between Violettes Lock and Big Slackwater, as well as the Western Maryland Rail Trail Towpath Connector, are enjoying a whole new experience thanks to towpath resurfacing. Gone are the rocks, roots, and ruts, the erosion and washouts, and the deep muddy wallows. Instead, a smooth, firm resurfaced towpath of crushed stone dust carries visitors safely along the C&O Canal. One delighted user described the new surface as "a revelation."

2017 marked the first year of the C&O Canal NHP's multi-year project to comprehensively resurface the more than 80 miles identified as most in need of rehabilitation. Thanks to the funding support of private donors to the C&O Canal Trust, along with funds from the National Park Service and the State of Maryland, resurfacing crews continue their work.

In 2021, Governor Larry Hogan announced a \$1.8 million grant to the National Park Service to rehabilitate 18 miles of the C&O Canal towpath in Allegany County through

the FY22 Transportation Alternatives Program (TAP). In 2023, resurfacing will continue with rehabilitation efforts focused on Allegany County. The C&O Canal towpath resurfacing efforts, with advocacy efforts supported by the Trust, have received more than \$6 million in TAP funding. We hope you've had an opportunity to enjoy this improved surface on the towpath.

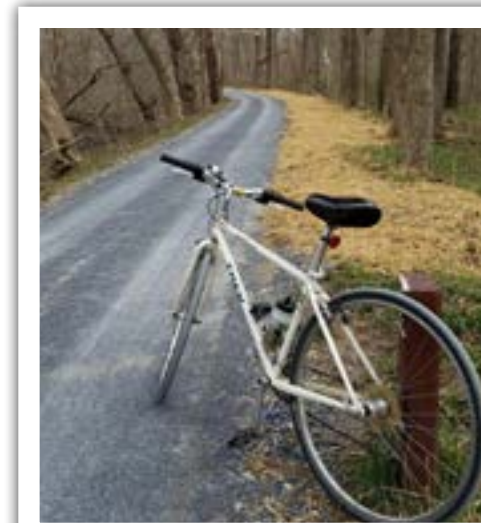


PHOTO BY C&O CANAL NHP/ NATIONAL PARK SERVICE

## 2022 CANAL COMMUNITY DAYS RESULTS

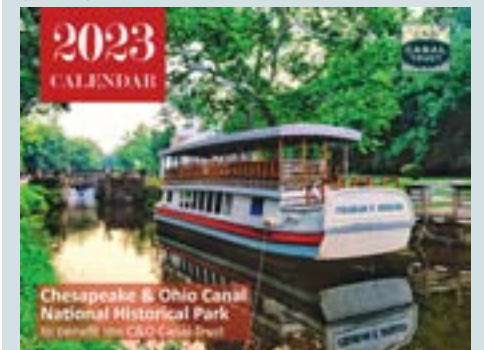


## HOLIDAY GIFTS

For the C&O Canal lover in your life, the C&O Canal Trust store has you covered: [www.CanalTrust.org/shop](http://www.CanalTrust.org/shop).



Canal Quarters Gift Certificates \$110-\$180



C&O Canal 2023 Annual Calendar \$12.95

# TRUST PRESIDENT & CEO ROBIN ZANOTTI ANNOUNCES RETIREMENT

After more than seven years as president of the C&O Canal Trust, Robin Zanotti announced in October that she would retire in early 2023. Zanotti is participating in a year of succession planning and transition management with a succession planning team led by the Trust's Board of Directors. This is meant to ensure the change in leadership is seamless and the organization maintains its momentum in both revenue and program growth. The search for a new president and CEO of the Trust was launched by the Trust's succession planning team.

"My work with the C&O Canal Trust has been the work of a lifetime," Zanotti said. "I've been part of truly dedicated teams of board members and Trust staff collaborating to advance the Trust's mission of supporting the C&O Canal National Historical Park. Donors and volunteers alike have joined us in making this important work possible. It is rewarding to be leaving to my successor a vibrant, growing organization with a bright future."

Under Zanotti's leadership, the C&O Canal Trust has attracted philanthropic support sufficient to double its revenue and achieve

substantial organizational growth. Staff size has grown thereby enhancing the Trust's ability to engage communities in its work to preserve and protect the C&O Canal NHP.

"Robin Zanotti has been a tremendous and visionary president of the C&O Canal Trust," said Chairman of the Board of Directors John Guttman. "She has made us a stronger organization, with greater reach and an enhanced ability to support the park as it serves its visitors. We wish her joy and happiness as she moves on to the next phase of her life."

Zanotti's 40-year career in fundraising and nonprofit executive leadership has spanned several high-level positions with West Virginia University Healthcare and Shepherd University in West Virginia, as well as St. Joseph Mercy Oakland Hospital, Capuchin Ministries, and University Liggett School in her native Michigan. She is one of approximately 100 individuals internationally to have earned the Advanced Certified Fund Raising Executive (ACFRE) credential. Prior to joining the Trust as president in April of 2015, Zanotti ran her own business, Zanotti Nonprofit Solutions, LLC, where she

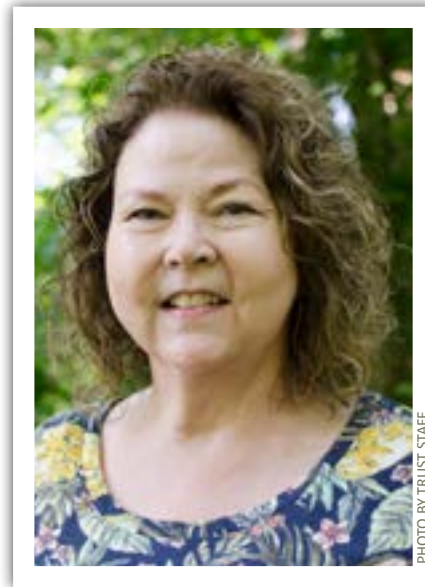


PHOTO BY TRUST STAFF

aided clients with strategy, fundraising, and management.

"It's crucial for the leader of the Trust and the superintendent of the park to have a good working relationship," said C&O Canal NHP Superintendent Tina Cappetta. "Robin and I have a synergy that will be difficult to replicate. I wish her well in her retirement and look forward to providing input to the process of selecting the individual who will lead the Trust forward as it continues to grow and support the park."

# CONGRATULATIONS TO OUR PHOTO CONTEST WINNERS

Congratulations to Shantel Breen and Paul Graunke for their recent winning photographs. Visit [www.CanalTrust.org/PhotoContest](http://www.CanalTrust.org/PhotoContest) for details on how you can enter and vote in our monthly contest!

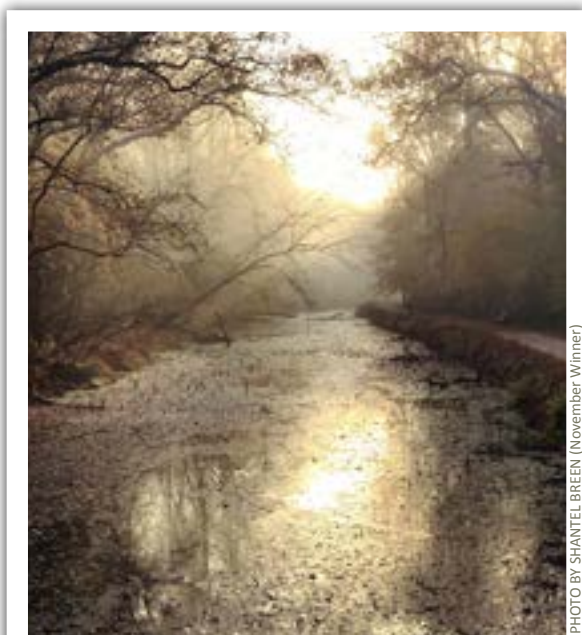


PHOTO BY SHANTEL BREEN (November Winner)



PHOTO BY PAUL GRAUNKE (October Winner)

# CANAL FOR ALL CELEBRATES SUCCESSFUL SEASON



PHOTO BY FRANCIS GRANT-SUTTIE



PHOTO BY FRANCIS GRANT-SUTTIE

The C&O Canal Trust's Canal For All program began in 2017 with the goal of engaging young people from underrepresented communities in programs throughout the C&O Canal NHP.

This year, the program provided fun and educational programs with community partner organizations located near the Park. Program partners included the Boys & Girls Club of Washington County, the Boys and Girls Club of the Eastern Panhandle, Community Bridges, Girls Inc., of Washington County, PeaceJam and TeenWorks.

During the summer, more than 300 youth joined the Trust to learn outdoor skills and take part in games, crafts, hikes and tours, birdwatching, and songs at Williamsport and Four Locks.

They endured the heat on the warmest of days and dodged more than a few raindrops and thunderstorms in the afternoons.

In addition to hosting youth for programming in the park, the Trust has offered several joint events this year with Canal Stewards, including a recent trash and vegetation removal event with partner group Georgetown BID and PeaceJam American University.

We are grateful to the following grantors for the nearly \$100,000 in support of this program: Montgomery County, Cornelia Cogswell Rossi Foundation, Pepco, the Healthier Greener Kinder Foundation, the National Park Trust/NPS Challenge Cost Share Program, and the Washington County Community Foundation Responsive Grant.

## "Park After Dark" continued from page 1

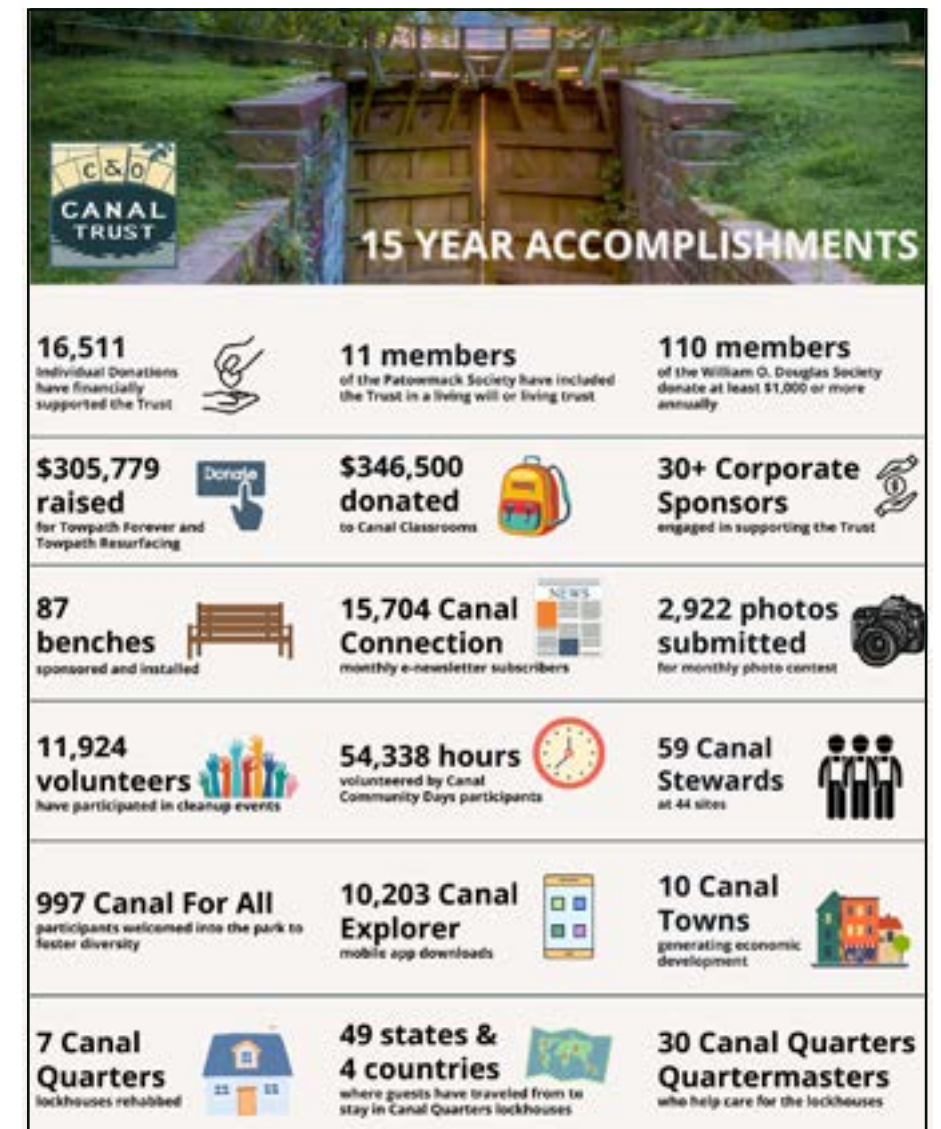
inspiration. Daofeng and Angela's generosity has helped to fuel the Trust's growth and impact the park in numerous ways. To date, they have sponsored 50 benches in the park.

This year's Park After Dark featured entertainment by Troy Engle & Southern Skies, and food by Corcoran Caterers. Inspire Hearts Fundraising team Bobby D. Ehlert and Erin Ward were emcees for the event. Attendees had the opportunity to enjoy s'mores around the campfire and approximately 35 people attended this year's night hike to the Great Falls Overlook.



PHOTO BY TURNER PHOTOGRAPHY

Longtime Trust supporters Angela and Daofeng He, and the Daofeng & Angela Foundation, received the William O. Douglas Stewardship Award.



# 2021-2022 HONOR ROLL OF DONORS

The Board of Directors and the staff of the C&O Canal Trust wish to thank all of our donors who have generously supported our work over the last fiscal year.

The following Honor Roll of Donors reflects donations of \$100 or more given between October 1, 2021 and September 30, 2022. Our full Honor Roll can be found on our website at [www.CanalTrust.org/HonorRoll](http://www.CanalTrust.org/HonorRoll).

Every attempt has been made to ensure this list is complete. If we have excluded you in error, please contact Lauren Riviello, Director of Development, at [riviello@canaltrust.org](mailto:riviello@canaltrust.org).

## CANAL VISIONARIES

**\$50,000 and up**

Daofeng & Angela Foundation Corporation  
Daofeng and Angela He\*

## CANAL PATRONS

**\$25,000-\$49,999**

Tony and Gay Barclay\*  
Knight and Ann Kiplinger\*  
Kiplinger Family Foundation

## CANAL STEWARDS

**\$15,000-\$24,999**

Charles H. Miller Charitable Foundation  
John Guttmann and Holly Cannon\*  
The J. Willard & Alice S. Marriott Foundation  
Eleanor S. Metcalf\*  
Robert and Dana Reisse\*

## CANAL SUSTAINERS

**\$10,000-\$14,999**

Anonymous Donor  
Community Foundation of Washington County  
Crescent Cities Charities  
Francis and Carolyn Grant-Suttie\*  
Marc Grossman and Milred Patterson\*  
Lorna Hainesworth\*  
Michael and Kathryn Hanley\*  
REI  
Richard E. and Nancy P. Marriott\*  
Richard E. and Nancy P. Marriott Foundation, Inc.  
Rena Subotnik\*

## CANAL EXPLORERS

**\$5,000-\$9,999**

Anonymous Donor  
A.R. Landsman Foundation

\* denotes William O. Douglas Society, our leadership donor society named for the late Justice William O. Douglas.

+ denotes Patowmack Society, individuals who have made provision in their estate plans for the C&O Canal Trust.

Arts & Humanities Council of Montgomery County  
James R. and Karen K. Beardsley\*  
BGE  
L. Paul Bremer and Mimi Fleury Bremer\*  
Tom Chappell\*  
Andy Chod\*  
Paul and Gail Chod\*  
Cliff and Deborah White Family Foundation  
CSX Corporation  
Deloitte  
Sherif Ettefa and Nermin Elhaddad\*  
FirstEnergy Foundation  
Friends of the Historic Great Falls Tavern  
G. Whitney Snyder Charitable Fund  
Michael and Susie Gelman\*  
Sandy Iru Grace\*  
Paul and Laurie Juola\*  
KPMG, LLP  
L. Paul and Frances W. Bremer Charitable Fund

Lisa Landsman\*  
Karen Lesser  
Mann Paller Foundation  
Mars Foundation  
Mary K. Bowman Fund for Historical and Fine Arts  
Minkoff Development Corporation  
Morningstar Foundation  
Nora Roberts Foundation  
Marsha Paller\*  
Ronald Piervincenzi\*  
Karen Beth Possner and Stan Wiggins\*+  
Deborah Schumann\*  
Ed Sowell\*  
Bert and Amy Swain\*  
The Jewell Foundation  
US Pharmacopeia  
World Bank Group  
Cliff and Deborah White\*

## CANAL TRAVELERS

**\$2,500-\$4,999**

Sandra Adams\*+  
Bou Family Foundation, Inc.  
Laurence M. Cafritz  
Michael and Denise Cetta\*  
Stephen and June Chaudet\*  
David and Page Dekker\*  
Dembo Jones, PC  
Louis and Martine Dubin\*

Ferris Family Foundation  
Thomas D. and Kathleen L. Fingleton\*  
Linda Fisher\*  
Hagerstown-Washington County Convention and Visitors Bureau  
Jessie Harris\*  
Mildred E. Himmelberger  
Katherine Harding Wunder Foundation  
Paul and Stacy Krogh\*  
Catherine Luke and Brett Beitzel\*  
Katherine Wunder Lunceford\*  
M&T Charitable Foundation  
Robert and Pamela Mertz\*  
Mike and Sue Mitchell\*  
David and Jennifer Mutrym  
April and Matthew Paine  
Linda and Arthur Rodbell\*  
Edward Ryan and Catie Malone\*  
Sidgmore Family Foundation  
Dan and Janette Spedden\*  
Anthony and Deanna Stacy\*  
Mark Stover\*  
Thai McGreivy, M.D. Memorial Fund  
Sandy Vogelgesang\*+  
Jonathan Warner\*  
Eleanor V. Weidenfeller\*  
Donna Westmoreland\*  
Michael R. and Robin S. Zanotti\*

## CANAL PRESERVERS

**\$1,000-\$2,499**

Anonymous Donor  
Ray and Jennifer Baldwin\*  
Elizabeth Barratt-Brown\*  
Richard and Adrienne Baxley\*  
Matthew Bechtel\*  
David T. and Sue S. Beddow\*  
Bedrock Foundation  
Peter and Ellen Berty\*  
Booz Allen Hamilton  
David and Eileen M. Brooks\*  
Peter Bross\*  
John Butman and Patty Lee\*  
B. Marie Byers\*  
Sally Cameron\*  
Anne Elizabeth Carlson\*  
Clark Construction Group, LLC  
Stan and Linda Collyer\*  
The Common Market  
Community Foundation of Frederick County  
William Randall and Lisa Cone\*  
Margaret Cotter

David Crookston\*  
Christopher Sumner Dann\*  
John Dema\*  
Kerry Dinneen\*  
Feng Dong and Mengping Chen\*  
June Elizabeth Dosik\*  
Philip T. Evans and Colleen M. McEnroe  
FINRA  
Mary Ann Fisher\*  
Robert V. and Roxanne Fleming, II\*  
Steve and Marie France\*  
Mary Griffin and Jerry Coursey  
Robert and Nancy Griffiths\*  
Grosch's Lawn Service  
Pamela Gwaltney\*  
Donald and Elizabeth Harrison\*  
Barbara Hartz  
Steven Herman and Susan Deller Ross\*

Christian and Nora Hohenlohe\*  
William Lawrence Hornbaker, Jr\*  
International Monetary Fund  
Doug and Nancy Kay\*  
Edward and Arleen Kessler\*  
Marc and Rebecca Korman  
Haodong Li\*  
Tobias Linden  
Michael Lindsay\*  
Gerald Lutes and Marsha Zelle\*  
Marod Family Fund  
Michael Marod\*  
Sharon Marlene Mastroni\*  
Margaret McCarthy\*  
Michael C. Mitchell Consulting, LLC  
Jason Michel\*  
Minerva Fund  
Steve Klein and Sally Moody\*  
Mountain View Brewery, LLC  
John Moyer\*  
William B. and Karen O. Newman\*  
Floyd Norton\*  
Geoff Patterson and Elizabeth Farry\*

Linda Ann Plummer\*  
Bruce and Kathleen Poole\*  
Ryan-Malone Family Charitable Fund  
Arthur and Linda Schwartz\*  
Seibert Wright Family Charitable Fund  
Catherine Seibert and Frederick Wright\*  
Roy and Ase Sewall\*  
Dawinder Sidhu\*  
Joanna Sturm\*  
Steuart and Linda Thomsen\*  
Glenn Tofil\*  
Barbara Boyle Torrey\*  
Keith and Christine Williams\*  
Robert Williamson and Caryl McNeilly\*+

WUSA-TV Washington DC

## BOAT CAPTAINS

**\$500-\$999**

Andy and Jim Mackintosh  
Michael Mann and Carol Salzman  
Frank Marcotte  
Christopher Maroshegyi  
Roger D. Moon  
David and Lilly Morenoff  
Howard Morse and Laura Loeb  
Bruce Neiswender  
Colonel Elias Nimmer, US Army, Retired  
Mark Obrinsky  
Paul O'Leary  
Palisades House DC  
Julia Perlman  
Charles Grimes Plimpton and Barbara Nyholm  
Katie Rapp  
Francis J. Ricciardone  
The Road Trip Mercantile  
Rockefeller Foundation  
Charles A. and Donna N. Salcetti  
Ramahi Sarma-Rupavtarm  
Eric Schweitzer  
Julian Schweitzer  
Jaret Seiberg  
Dennis S. Shiflet +  
Gary Sikora and Peg Shaw  
Silver Ocean Capital Holdings, LLC Silverwood Trust  
Greg Simon and Margo Reid  
Craig and Erika Singer  
Stanley and Jolene Slotter  
Herb and Jane Stevens  
Adam Stull  
Beverly Ann Swain  
Thomas Szuba  
Teetsel & Jacobs Charitable Fund  
Texas Instruments Foundation  
Paul Thomas  
Cory A. Van Horn  
Mark Walsh  
Washington Fine Properties  
Susan Wexler  
Timothy and Alba-Marina Williams  
Younger Toyota

## LOCKKEEPERS

**\$250-\$499**

Anonymous Donor  
Jennifer Alvidrez  
Nancy Appleby  
Eliza Barclay  
John Barham  
Cherry A. Barr

William Francis Bavinger  
Susan Beall  
Darr Beiser  
William Bell  
Barbara Blaylock  
Blechman-Morenoff Foundation  
Susan Board  
Stephen A. and Karen Bokat  
Jan Bove  
Larry and Marilyn Brock  
Greg and Beth Brown  
Jim Burks and Bette Jane Pappas  
William Byron  
Alan Wallace Cashell  
Gail Chambers  
William James Clark  
Cathleen Cooper  
Delanson Crist and Maria Kozloski  
Meg Czarniak  
Michaela Daniel  
David and Kathleen Gilbert  
Elwyn Davies  
Geoffrey and Meg Dawson  
Bob and Peggy Dennis  
John Donnelly  
David Doyle  
Kenneth and Diane Feinberg  
Aaron Ferguson  
Thomas D. Fina  
Theresa Fleming  
Jeff Fox  
Andrea Freeman  
Benjamin Gaddy  
Matthew Gamser  
Zibing Gao  
Ralph Garboushian  
LeeAnne Gelletly  
Ruthann M. Giusti  
Carol Goodloe  
Sandra Graham  
Karen Mary Gray  
Paul Hagan  
Henry H. Hansen  
Michael D. Harm  
Michael Harrington  
Patricia Harvey  
Gaelyn Hauser  
Stanley He  
Peter C. Hinz  
James and Jean Hochron  
Lois Hollan  
Janney, Montgomery Scott, LLC  
Michael and Carol Joseph  
Robert Kassebaum  
Christopher Kelly  
Beth Kramer  
Patrick Kuhlmann  
Lori Lefkowitz  
Lance Liang  
Steven and Janet Magel  
Shawn Maher

Judith Mansfield  
Marathon Charity Cooperation  
Steven and Andrea Matney  
Keith I. McConnell  
Chris McIsaac and Tracey Braun  
Glenn Melcher  
Peter Millock  
Warren Minami  
Jonathan Moore and Bradley Clements  
Judith B. Morenoff  
Robert R. Moylan  
National Society Women Descendants of the Ancient and Honorable Artillery Company  
James and Ann Nelson  
Jim Nelson  
Lillian and Matthew Nolan  
James R. and Maureen O'Connell  
Frederick C. Ohly  
Nicholas Panebianco  
Margaret Parlato  
Margaret N. Percesepe  
Gerald and Janet Pietsch  
Jeff and Emily Popera  
Jessica Poppele Stone  
Mary Qualiana  
C. Sanjivi Rajasingham  
Rakuten Americas  
Donald Ray Ramsey, Sr.  
Bing Rao  
Willard O. Raynor  
Thomas B. Riford  
Lauren Riviello and Jacob Matz  
Robert A. Robbins and Marjorie Cohen Robbins  
Marianne Roderick  
Eddy Rogers III  
Brenda Holt Rosa  
Kathy Rosa  
Julia Ross  
Norman Sandstrom  
Raphael and Katherine B. Semmes  
Tim Seward  
Sheila Rabb and Edward Lee Weidenfeld Charitable Fund  
Lynne Sherburne-Benz  
Patrick Sheridan  
Kenneth D. Simonson and Jan Solomon  
Dana G. and Lisa M. Sippel  
Richard and Anastasia Smith  
Eric Solomon  
Lafe E. Solomon and Catherine Grayson Crockett  
Laura Steuart  
Lawrence and Suzanne Stipek  
Noeleen Sullivan  
Rachel and Kenneth Towbin

Diane Tworog  
 Dilawar and Lois Uthman +  
 John Van De Weert  
 William Walderman  
 Scott Wallace  
 Ann Webber  
 Scott C. Weidenfeller  
 Dennis White  
 Masako White  
 Jennifer S. Williams  
 Andrew W. Wilson  
 Shane Wolfe  
 John A. and Margery A. Ziegler

William Antone  
 Larry Arnold  
 Scott and Margi Arnold  
 Constance C. Arvis  
 Ben Ashman  
 Diane August  
 Andrew and Sue Austin  
 Stephen and Kate Baldwin  
 Robert Bannister  
 Bannockburn Community Club  
 Bryan Barbin  
 Patricia Barrett  
 Joan M. Barron  
 Frederick Durrie Barton  
 Sheila Bassett  
 James Baxter  
 Michael J. Beck  
 Claire and Keith Beighley  
 Donald and Catherine Bellenger  
 Bruce and Susan Bender  
 Vicki Bender  
 Katherine Benjamin  
 Jeffrey Berger and Diane Arkin  
 Emily and Casey Berman  
 James Blair  
 James Blenko  
 Mark Blofeld  
 Katharine E. Boerner  
 Andrew and Kaye Boesel  
 John Bohman  
 Jody Bolz

Mary Ann Bopp  
 Janine Borofka  
 Benoit Bosquet  
 Jeffrey and Sandra Bozworth  
 Peter Brandriss  
 Breakthrough Energy  
 Sue Bremner  
 Eric Brenner  
 David Brinkley  
 Rita Brown  
 Denise Brownlee  
 Beverly Byron  
 Canoe Cruisers Association of DC  
 Jarrett Cantrell  
 Tina Cappetta and Ron Batchter  
 Robert L. Carpenter  
 James and Kathleen Carr  
 Juan Pablo Carriedo  
 Jon Carver  
 Aisling Casey  
 Richard R. Casteel  
 Jeffrey W. Chaloupek  
 Gilbert Chauny  
 Choate Hall & Stewart LLP  
 Susan Ciccarelli  
 Mark W. Cleveland and Lucinda  
 A. Shay  
 Paul and Joan Cleveland  
 Galen and Sandy Clipp  
 Caroline Coburn  
 Cohen Family Charitable Fund  
 Warren Cohen  
 Paula and Pablo Collins  
 Rita Colwell  
 Victoria Commins and David  
 Mykita  
 Chanel Compton  
 Ross Cook and Carol Becker  
 Steve Cook  
 Jonathan Coopersmith and Lisa  
 Halperin  
 David Cosson  
 Peter R. Cowley  
 Frank and Joanne Crantz  
 Brent Croghan  
 Jen Cromer +  
 Dean W. Danowski  
 Mara Darsow-Moreau  
 David and Renee Connelly  
 Allan P. Davis  
 Susan Davis  
 Dennis Demeyer  
 Cynthia Deutermann  
 Lynda DeWitt  
 Laura E. Diamond  
 Timothy Diaz  
 John Dinges and Carolina Kenrick  
 John Dinuzzo  
 Helen DiRenzo  
 Christian DiSpigna  
 Sarah Dorrance

Dan Dowell  
 Norma B. Dugger  
 David Dunn  
 Gary Eckard  
 Carol Enemark  
 Ralph Ellsworth Eshelman  
 Robert L. Failor  
 Julia Falk  
 Joseph and Maureen Fama  
 Leo A. Farber  
 Gregory Farmer  
 Debbie Feinstein  
 Rachel Feldman  
 Scott and Loretta Feldman  
 Tracie Felker  
 Janice Ferrer  
 Karen Finkelman  
 John Foley  
 Mary Fortuna and Chris (Robert)  
 Kuser  
 Walter Fotterral  
 Carl E. and Charlotte A. Frasch  
 Gail Frazer and Philip Gerard  
 Dennis Freeman  
 Eric Froehlich  
 Thomas Fusi  
 Joanne Gabor  
 Heather E. Gange  
 Diana Gaviria  
 Bill Gernon  
 Antonia Giardina  
 Jeffrey Gibbs  
 Tamara Giberson  
 Gilead  
 Alan C. Gill  
 John W. and Tammy Duke Gill  
 James Gilmer  
 Christie Gingras  
 David Glenn  
 Jane I. Godfrey  
 Saul and Gail Goodman  
 Google  
 Alan Gourley and Sarah Brown  
 Gene Granof  
 Donald P. Graunke  
 Gina Green  
 Diana Guinnup  
 Robert Alan Gurval  
 Mengyun Hao  
 Pamela Joan Hardy  
 Roy B. Harrill  
 Steven Harrison  
 John L. Hartge  
 Jeffrey Hartley  
 Matthew Haskins  
 Phoebe Spencer Virginia  
 Hathaway  
 Kay Haynes  
 Michael Hays and Kim Matthews  
 Ben and Jennifer Helwig  
 Nicholas Herber

Katherine Hillas  
 Robert J. and Judith H. Hines  
 Kathryn B. Hokenson  
 Louise and William Hopewell  
 Roselyn Hopkins  
 Denise Horner  
 Daniel Horning  
 Edwin Hostetter  
 Joseph T. and Mary M. Howard  
 Forest Howell  
 I.J. Hudson IV  
 Terence Hurley  
 John Maynard Hutchinson  
 Laura Hutson  
 Benjamin Ivins  
 Christopher Jackson  
 Cyril Jacquot  
 Jim and Diana Jamieson  
 Barbara Jenkins  
 Johnny Jesson  
 The Joe W. II & Marg M. Fleming  
 Trust  
 John Hancock  
 Eric Johnson  
 Todd Johnson  
 Joiner da Silva Charitable Giving  
 Fund  
 Jonathan E. Hardis Charitable Fund  
 Adrienne A. Jones  
 Sheldon and Karen Jones  
 Jim Jorling and Kathy Kirchner  
 Ken Jutzi  
 David Kanazawa  
 Joseph F. Kanney  
 Donald A. Kaplan  
 Linda Kean  
 Joseph A. Keating and Roberta B.  
 Albert  
 Travis Kebler  
 Nancy Keener  
 Richard and Barbara Kelly  
 Tanya Kennedy  
 Robert H. Kessler  
 John J. and Anne C. Killeen  
 Keith and Stace Kimmel  
 G. Russell Kincaid  
 John E. Kinzer  
 Daniel Kirkpatrick  
 Gary J. Klein  
 Helena M. Klumpp  
 Adele M. Knott  
 Kathleen Koehler  
 Raymond Kogan  
 George Kolodner  
 Nicolas Kotschoubey  
 Elliot Scoville Krafstr  
 Robert Kramer  
 Holger Kray  
 Nelson Labbe  
 Teresa Langelan  
 Mathias Laubert

John Lavelle  
 Mackinnon Lawrence  
 Peggy Lee  
 Donald E. and Marjorie A. L  
 Lentzen  
 Richard Leu  
 Elliott and Pamela Levine  
 William Levitan and Jackie Lewis  
 Christine Ley  
 Jane Ling  
 Danielle Liquori  
 Paul J. Litvak  
 Harold and Karen Logsdon  
 Virginia Luster  
 Andrey Lyashko  
 Thomas E. Lynch  
 Patricia Malone  
 Louis and Edythe Manza  
 Risa Margulies (Family & Nursing  
 Care)  
 Susan Marquis  
 Kieran and Alisa Mays  
 Dennis D. and Diane K. McCarthy  
 Alan and Heather McCarty  
 Matthew McClymont  
 James McDermott  
 Diane McGurgan  
 David McKibbin  
 David P. McMasters  
 Brian and Carolyn Mease  
 Paul Meehan  
 Tatjana Meerman  
 Dale and Elizabeth Meers  
 Donald Timothy Meier  
 John Membrino  
 Harry B. Meyer and Lesley A.  
 Kash  
 Ann Michell  
 Allyson B. Miller  
 Craig and Ilene Miller  
 William H. and Jean Atkinson  
 Mitchell  
 Eric Moe  
 Jean F. Montgomery  
 Daniel Moore and Joanne  
 Goodrich  
 Jerry Moore  
 Thomas Moore  
 Judy Moring  
 James F. Morris  
 Alla Morrison  
 Michael E. and Maryvance M.  
 Morrisroe  
 Karen Mudar  
 Pat Munoz  
 Stephen Joseph Napolitano  
 Thomas Nardone and Edith Lam  
 Lizardo Narvaez Marulanda  
 Matthew R. Nau  
 John and Barbara Newland  
 Eric Nothman

## PHOTO CONTEST WINNERS

The beautiful photographs included with our Honor Roll of Donors are winning photographs from our monthly Photo Contest. Visit <http://www.canaltrust.org/photocontest> for details on how you can enter your canal photography in our monthly contest, and visit our Facebook page at the beginning of every month to vote for your favorites!

Martha and John Obrycki  
 Sandra Occhipinti  
 Mia O'Connell  
 Jennifer Oehme  
 George L. Ohrstrom II  
 Bruce and Christie O'Neill  
 Michael R. and Lisa S. Opsahl  
 William Orsinger  
 Michael and Annerieke Owen  
 Michael Pascarella  
 Jack Paulik  
 Karen Pence  
 Bryan and Sarah Perry  
 John and Michelle Person  
 Marea P. Petrelles  
 Eric and Suzanne Pilsk  
 Maryvonne Plessis-Fraissard  
 Walter L. Plimpton  
 Marcia Polhamus  
 Travis Powers  
 Michael and Carolyn Prudich  
 Eric B. Pyle  
 Maureen Quinn, L.Ac.  
 Raytheon Technologies  
 John and Terry Reimer  
 John Rentzepis and Virginia Poole  
 Eric and Tammy L. Rhoades  
 Stephen H. and Bette Ries  
 Edgar E. Rivas  
 Asiya Robbins  
 David Romanowski  
 Elisabeth Rood  
 Sue and Rinze Roosma  
 Alissa Rosenstein  
 David Frank Rossmeisl  
 Marcia Rounsaville  
 William Kirk Roy  
 Robert J. and Fran A. Rubin  
 Kathleen and Ricky Sahn  
 Niklaus Salafsky and Julia Segre  
 Jennifer Sara  
 David Satola  
 Cay Savel  
 James and Madeleine Schaller  
 Lydia Schindler  
 James and Denise Schleckser  
 Don Schlimm  
 Chris Schmidt  
 Barbara Schneider  
 Lucinda Schofer  
 Maria Schofer  
 Richard D. and Geane L. Schubert  
 Laura Cunningham and Scott  
 Ramsey  
 Carol Scott  
 David M. Segal  
 Lois Segal  
 Vin and Karen Seibert  
 Chris R. Seier  
 Janne Sevanto  
 Marlene J. Severson and David  
 Cooley  
 Thomas Shaffer and Karen  
 Vander Linde  
 Philip Shanholtzer  
 Martha Shannon  
 Terry and Susan Sharer  
 Shantanu Sharma  
 Jim Shea  
 Rebecca Shoemaker  
 Topper and Alison Shutt  
 Simon and Nancy Sidamon-  
 Eristoff  
 Mary Anne Simon  
 Peter Simpson  
 Dana E. Singiser  
 Donald Sladkin  
 Brian Smith  
 Ted Spiegler  
 Alisa Stacy  
 Rachel Glazer Stansberry  
 Carlene Stephens  
 Lee and Pat Stine  
 Sidney Stoffels  
 Larry and Kathleen Stovicek  
 Sally Strain  
 Walt Stull and Diane Ellis  
 John H. Sturc  
 Henry Su  
 Philip and Margot Sunshine  
 Jane Swensen  
 Jeffrey J. Tarbert and Madylyn B.  
 Cafruny  
 Leslie A. Tate  
 Emma Tatem  
 Sheila Taube  
 Timothy B. Taylor  
 Mark and Sheila Thalhimer  
 Jane and Jerry Thimme  
 Kenneth Thomas  
 Michael Tollini  
 Rick Tucker



PHOTO BY BRIAN J. PORTER

John D. Tuthill  
 John S. and Kathy K. Uzzo  
 Adriana Vohden  
 Nancy Voit  
 Matthew L. and Wilma S. Wald  
 Li Wang  
 Robert R. and Nadja Ward  
 David and Debora Warrenfeltz  
 Richard Waugaman  
 Matthew Waurio  
 Glassman Wealth Services  
 Johannes Wehebrink  
 Judith Weil Shanks  
 Andrew West  
 Tim Whetzel  
 Kathleen Whisenhunt  
 Roland and Lee Gillespie White  
 Gary A. Wilhelm  
 Fred Williams  
 Rogelio L. Williams  
 Philip Wirtz  
 Robert Wise  
 Ginger Withers  
 James W. and Susan E. Wolfe  
 Tyra Wolfsberg  
 Matthew Woodill  
 Chris Wright  
 David Wyman  
 Richard Wymelenberg  
 Gabriel Young  
 John Robert Zaums  
 John and Elizabeth Zinner  
 Carl and Theresa Zmola  
 Davide Zucchini  
 Susan Zweighaft and Richard J. Reed  
 James Zwiebel

## MEMORIAL GIFTS

*In memory of Flora August*  
 Diane August  
*In memory of Deacon Brew*  
 Shawn Maher  
*In memory of Clark Robert Brill*  
 Ted Spiegler  
*In memory of Stephen Chrisman*  
 Daniel Rial  
*In memory of Barry Cohen*  
 Cohen Family Charitable Fund  
*In memory of Mosley Mercer*  
*Cross III and Joy Aschenbach*  
 Carolyn Fritch Clewell  
 Barbara Moffet  
 Michael Pascarella  
 Maria Aschenbach Spottswood  
*In memory of James Curfman*  
 David and Aileen Curfman  
*In memory of Anthony G. Freeman*  
 Andrea Freeman  
*In memory of Helen Fox Glazer*  
 Rachel Glazer Stansberry  
*In memory of Mark H. Hansen*  
 Henry H. Hansen  
*In memory of John M. Hartz*  
 Barbara Hartz  
*In memory of Madelyn Hathaway*  
 Phoebe Spencer  
 Virginia Hathaway  
*In memory of Douglas R. Hokenson*  
 Kathryn B. Hokenson  
*In memory of Elliot Krafzur*  
*Pamela Joan Hardy, from Joan, Janet, and Catherine*  
 Roger D. Moon  
 Martha and John Obrycki  
 Colin and Doreen Voigt

*In memory of Dr. Bernard Wayne Knott*  
 Adele M. Knott  
*In memory of Alison Levine*  
 Emma Tatem  
*In memory of Charles Mansfield*  
 Cheryl Duling  
 June Kennedy  
 Risa Margulies  
 Julia Ross  
*In memory of Edward Morenoff*  
 David and Lilly Morenoff  
 Judith Morenoff  
 Blechman-Morenoff  
 Foundation  
*In memory of Mary Alice Mutryn*  
 Mary Ann Bopp  
 Meg Czarniak  
 Janet Dante  
 Katherine Less  
 Paul J. Litvak  
 Peter Millock  
 Judy Moring  
 Ginger Withers  
*In memory of Brad Northrup*  
 William Antone  
 Emily Casey Berman  
 Warren Cohen  
 Kathy Daniel  
 Christopher Sumner Dann  
 Kathleen and Ricky Sahn  
 Jane Swensen  
*In memory of Mickey Reed*  
 Cindy and Chris Hall  
*In memory of John N. Rentz, Jr.*  
 Wade J. Sovonick  
*In memory of Erik Rosa*  
 Claire and Keith Beighley  
 David and Kathleen Gilbert  
 Glenn Kehs  
 Diane Lynn Rorabaugh  
 Brenda Holt Rosa  
 Kathy Rosa  
 Teresa Valentine  
 Bruce Welch and Teresa Miller  
 Fred Williams  
*In memory of Curt Schafer*  
 James and Kathleen Carr  
*In memory of Dr. Jaswinder S. Sidhu*  
 Dawinder Sidhu  
*In memory of Mickie Simpson*  
 Martha Shannon  
*In memory of Alfred Sorkowitz*  
 Ann Michell  
 Sheila Taube  
*In memory of Frederick O. Swain*  
 Beverly Ann Swain  
*In memory of Michael Tierney*  
 Laurence M. Cafritz  
*In memory of Charles and Ruth*

*Waugaman*  
 Richard Waugaman  
*In memory of Charles Weidenfeller*  
 Andrew and Sue Austin  
 Cindy and Andrew Fenton  
 Leonard and Mary Alice Grieco  
 Margaret and David Grow  
 John Maynard Hutchinson  
 Sheldon and Karen Jones  
 Richard and Barbara Kelly  
 Linda and Roger Lark  
 Patricia Malone  
 Elaine Mcardle  
 Robert R. Moylan  
 Willard O. Raynor  
 Miles and Ann Smid  
 Alisa Stacy  
 Jane and Jerry Thimme  
 Eleanor (Jackie) Weidenfeller  
 Scott C. Weidenfeller  
*In memory of George "Hooper" Wolfe*  
 Vicki Bender  
*In memory of Geoffrey Wolfe*  
 Sandy Vogelgesang

## TRIBUTE GIFTS

*In honor of Vince Abramo*  
 Charles Michael Martin  
*In honor of Oliver and Emily Ames*  
 Caroline Coburn  
*In honor of Gay Barclay*  
 Carter and Peggy Bacon  
 Kerry Dinneen  
*In honor of Larry Brock*  
 Eric Brenner  
 Valerie Vanhollen  
*In honor of Naomi Cahn*  
 Jonathan Coopersmith and  
 Lisa Halperin  
*In honor of Raymond Ciesinski*  
 Alexa Blanchard  
*In honor of Nicholas Clements and Larry Morales*  
 June Elizabeth Dosik  
*In honor of Patrick M. Coyle*  
 Katherine O'Brien  
*In honor of Mike Feldman*  
 Rachel Feldman  
*In honor of Francis Grant-Suttie*  
 Robert V. and Roxanne  
 Fleming, II  
*In honor of John Guttman, volunteers, and staff of C&O Canal Trust*  
 Mark and Sheila Thalhimier  
*In honor of Florence Harth-Carter*  
 Leslie Carter

*In honor of Richard Ingebretsen and Abby Bergren*  
 Daniel Horning  
*In honor of Joyce Jakubowics*  
 Lillian and Matthew Nolan  
*In honor of Ryan Heitz*  
 Thomas Szuba  
*In honor of Anna Kelly and Randall Hitchins*  
 Lynda DeWitt  
*In honor of Debby and Allan Kover*  
 Steven Kover  
*In honor of Dr. Peg McCarthy*  
 Ann Robbins  
*In honor of Kirk Mettam, Lisa Couturier, Kendra and Mike Canty*  
 Laura Steuart  
*In honor of Mimi and Sellers Garrett*  
 John Barnhill  
 Robert Carpenter  
 Charles Grimes Plimpton and  
 Barbara Nyholm  
 Walter Plimpton  
*In honor of Jane Neff*  
 David and Janet Curtis  
*In honor of The Puglisi Family*  
 Kathleen Whisenhunt  
*In honor of Laura Talmadge Reagan*  
 Lisa Crawford Terrell  
*In honor of Veronica Schlimm*  
 Don Schlimm  
*In honor of Violet and Samuel Stanley*  
 Ron Stanley  
*In honor of Buster Tate*  
 Leslie A. Tate  
*In honor of The Teichbergs*  
 Janine Borofka  
*In honor of Steuart Thomsen*  
 Molly Webb  
*In honor of Thomson Trail Riders and PFWPA*  
 Nancy S. Kury  
*In honor of Peter Williams*  
 Cody Anderson  
*In honor of the volunteers who maintain and love the Park*  
 Laura Cunningham and Scott  
 Ramsey  
*In honor of Robin Zanotti and Jane Neff*  
 Bruce and Kathleen Poole  
*In honor of 2021 Clients of Washington Fine Properties*  
 Margaret N. Percesepe  
 Topper and Alison Shutt

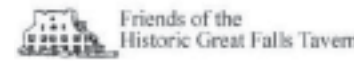
## BENCHES

*The Daofeng & Angela Foundation*  
*Bench Collaboration:*  
 Mile 10.3 – Downriver from  
 Carderock  
 Mile 19.6 – Lockhouse 22  
 Mile 50.8 – Lockhouse 29  
 Mile 58.1 – Weverton  
 Mile 64.2 – Downriver from  
 Dargan Bend  
 Mile 72.2 – Downriver from  
 Lock 38  
 Mile 90 – Opequon Junction  
 Campsite  
 Mile 100 – Upriver from  
 Williamsport  
 Mile 116.3 – Licking Creek  
 Hiker Biker Campsite  
 Mile 137.8 – Downriver from  
 Indigo Neck Campground  
*In memory of Sam Himmelberger*  
 Mile 50.8 – Lockhouse 29  
*In memory of Karin Holtz*  
 Mile 22.8 – Violettes Lock  
*In memory of Ben Lesser*  
 Mile 8.5 – Lock 8  
*In memory of Mary Mutryn*  
 Mile 8.9 – Between Locks 10  
 and 11  
*In honor of Victor Schneider*  
 Mile 14.5 – Great Falls

## PATOWMACK SOCIETY

Sandra Adams  
 Jen Cromer  
 Eric Jacobs  
 Michael Marmer  
 Caryl McNeilly  
 Karen Possner  
 Joy Pritts  
 Dennis Shiflet  
 Ingrid Sunzenauer  
 Lois Uthman  
 Sandy Vogelgesang

## CANAL COMMUNITY DAYS SPONSORS



WUSA9  
 Clark Construction  
 Devils Backbone Brewing  
 Company  
 FINRA  
 Grosh's Lawn Service  
 Minkoff Development  
 Palisades House DC  
 Younger Toyota

## PARK AFTER DARK SPONSORS



Kiplinger Family Foundation



A.R. Landsman Foundation  
 John Guttman and Holly Cannon



Marlene Appleton & Mark Stover  
 Michael & Denise Cetta  
 Francis & Carolyn Grant-Suttie  
 Paul & Laurie Juola  
 Mann Paller Foundation  
 The Jewell Foundation  
 Sandra Adams  
 Liz Barratt-Brown  
 Steve & June Chaudet  
 Sandy Grace  
 Marc Grossman  
 Ed & Arleen Kessler  
 Sandy Vogelgesang  
 Robin & Mike Zanotti

## TOWPATHGO PARTICIPANTS

Tammy Giberson  
 Lorna Hainesworth  
 (Top Fundraiser)  
 John Moyer  
 Katie Rapp

We are grateful to our donors of up to \$100 and have acknowledged them on our website at [www.CanalTrust.org/HonorRoll](http://www.CanalTrust.org/HonorRoll).

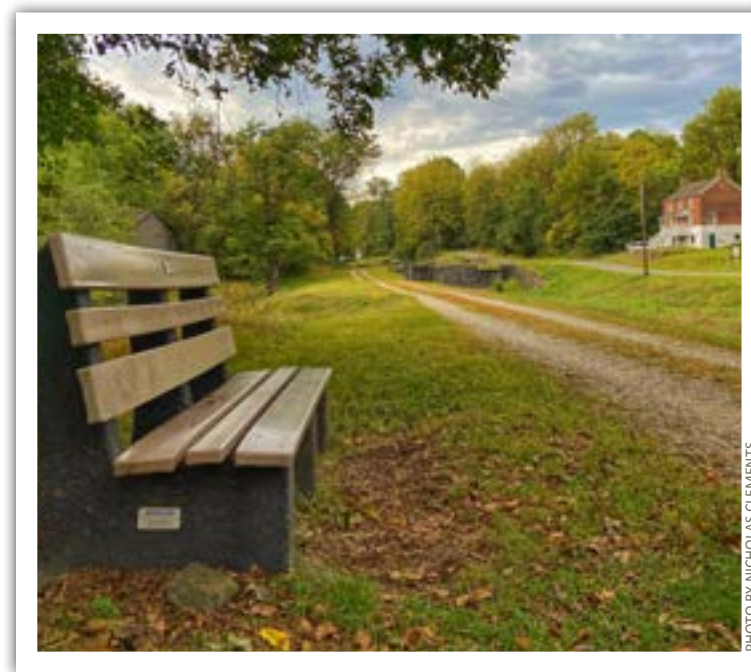


PHOTO BY NICHOLAS CLEMENTS



**C&O CANAL TRUST**  
142 W. POTOMAC STREET  
WILLIAMSPORT, MD 21795  
*The official nonprofit partner of the  
C&O Canal National Historical Park*



## SUPPORT THE TRUST

Make a gift that will help protect, restore, and promote the extraordinary resources of the C&O Canal National Historical Park by visiting [www.CanalTrust.org/give](http://www.CanalTrust.org/give) today!

## *Escape to nature*

Authentic, historic lockhouses along the C&O Canal



“We enjoyed staying at Lockhouse 21. Thank you for the great historic experience. We look forward to future visits.” - Steve

“The lockhouse is darling and you did a great job on renovations. We were happy we had the opportunity to stay here.”  
- Deanna

**BOOK YOUR STAY NOW: [www.CanalQuarters.org](http://www.CanalQuarters.org)**



THE CANAL QUARTERLY IS PRINTED ON 50% POST-CONSUMER RECYCLED PAPER