



THE CANAL QUARTERLY

WWW.CANALTRUST.ORG

CANAL CLASSROOMS SERVES 40,000 KIDS IN 5 YEARS

The innovative Canal Classrooms program, managed by the C&O Canal National Historical Park, just completed its fifth year of operation. With the financial support of the C&O Canal Trust, the program has served over 47,000 school children during its run, including 12,500 Pre-K to 12th grade students from 230 schools during this past 2016-17 school year.

The Trust raises funds to support the Canal Classrooms program, which focuses on providing school children with STEAM (science, technology, engineering, arts, math) lessons focused on the Park's natural and historical resources. Over the years, with help from you, we have donated over \$208,000 to support this mission.

Canal Classrooms gets kids out of the traditional classroom and into the Park, where they learn about the C&O Canal using curriculum taught by Park Rangers and the Canal Classrooms Corps (CCC). The CCC is made up of 50 retired teachers, recruited and trained on the Park's education programs. The C&O Canal Trust supports stipends for these teachers, who this year provided over 3,000 hours of service.

The program seeks to inspire life-long learning through hands-on, curriculum-



Students examine a model of the C&O Canal, housed in Williamsport, while discussing the operation of the canal with a Canal Classrooms Corps member.

based educational programming to students who live along the C&O Canal. Canal Classrooms was launched in 2013 and has grown steadily since its inception. Besides providing a unique educational experience, the program also aims to inspire a new

generation of life-long park stewards.

Students visiting the canal participate in a variety of lessons depending on their age. Activities include learning how a lock operates, practicing mapping skills, hearing about the history of the canal, exploring the lives the lockkeepers and canallers lived,

examining the flora and fauna of the Park, and learning more about native species, such as the bats Hancock Elementary School studied during their National Bat Week visit.

Washington County's high school students participate in a Citizen Scientist program, which this year saw 150 students testing water quality and recording their collected data in an online platform.

"The Trust strongly supports the Canal Classrooms initiative as a means to provide grade school and high school-aged children the chance to learn the history, culture, and science of the canal outside of a traditional classroom setting," stated Trust President Robin Zanotti. "We are so appreciative of the generosity of the individuals who, though their gifts, have made this unique educational opportunity a reality."



A member of the Canal Classrooms Corps explains to Hancock Elementary School fourth graders how canallers used a horn to alert the lockkeepers of their approach.

BOARD OF DIRECTORS

CHAIR Michael C. Mitchell
VICE CHAIR Stephen E. Chaudet
TREASURER Bert Swain
SECRETARY Kathy Poole
Sandra Adams
William Randall Cone
Sherif Ettefa
Francis Grant-Suttie
John S. Guttman
Donald Harrison
Edward J. Kessler
Bill Newman
John Schnebly
Dan Spedden
Anthony Stacy
Sandy Vogelgesang
Anne Wallace
Robin Zanotti, ACFRE

STAFF

PRESIDENT

Robin Zanotti, ACFRE

DIRECTOR OF DEVELOPMENT

Patricia Barber

DIRECTOR OF PROGRAMS & PARTNERSHIPS

Becky Curtis

DIRECTOR OF MARKETING & COMMUNICATIONS

Heidi Glatfelter Schlag

OFFICE ADMINISTRATOR

Jane Neff

VOLUNTEER AND PROGRAM COORDINATOR

Josh Whitman

COMMUNICATIONS/ DEVELOPMENT ASSOCIATE

Melanie Draper

A NOTE FROM THE PRESIDENT

My season of gratitude . . . I am writing this letter having just returned from a National Philanthropy Day celebration where volunteers were recognized for their efforts in fundraising. It was a joyful event, and I was thrilled to see Kathy Poole, Secretary of our Board of Directors, presented with the Distinguished Volunteer Award from the Western Maryland Chapter of the Association of Fundraising Professionals. Kathy has been a tireless advocate for the C&O Canal Trust, and I am so thankful for her unwavering support and advice. See page 4 for more on Kathy's award.

At our recent Park After Dark event, we recognized Ami Aronson and the Bernstein Family Foundation with the William O. Douglas Stewardship Award, and Jim Heins with the Canal Pride Volunteer Service Award. Both Ami and Jim have been loyal and generous supporters of the Trust, and I am grateful to them for their stewardship and service. Thus begins my season of gratitude.

• Gratitude for our donors, volunteers, Park visitors, and Trust and National Park Service (NPS) staff. We all combine our commitment to the Park to make big things

happen. The following pages will outline some accomplishments you helped us achieve. It was a good year.

- Gratitude for the exceptional generosity of those who support the Trust and make all of our efforts possible. You will find our annual Honor Roll of Donors beginning on page 6. If you see your name, please know how grateful I am for your support.
- Gratitude for the natural splendor of the Park and the man-made wonder of the canal and all its historic structures.
- Gratitude for a successful career that has afforded me the opportunity to serve organizations as important as the Trust and NPS.

I hope you are experiencing your season of gratitude, which includes very special holidays with family and friends. Thanks for making us part of your efforts to show some love to the Park.

Wishing you all the best for 2018,



Robin Zanotti, Trust President

I SUPPORT THE C&O CANAL!

Giving Levels:

Canawler (up to \$250), Lockkeeper (\$250-\$499), Boat Captain (\$500-\$999)
William O. Douglas Society – Canal Preserver (\$1,000-\$2,499), Canal Traveler (\$2,500-\$4,999), Canal Explorer (\$5,000-\$9,999), Canal Visionary (\$10,000+)

___ \$50 ___ \$100 ___ \$184.50 ___ \$500 ___ \$1,000 ___ Other _____

Please make your check payable to the C&O Canal Trust.*

Name: _____

Address: _____

E-mail: _____

FOR CREDIT CARD DONATIONS ONLY:

Please charge my: ___ VISA ___ MasterCard ___ Discover
___ American Express

Credit Card #: _____ Exp. Date: _____

Signature: _____

Telephone #: _____

The C&O Canal Trust is a 501(c)(3) non-profit organization. Donations to the Trust are tax-deductible to the fullest extent of the law.

Phone: 301-714-2233

* MAIL TO: C&O Canal Trust, 1850 Dual Highway, Suite 100, Hagerstown, MD 21740

ONLINE: Make a secure donation online at www.CanalTrust.org

CANAL FOR ALL PARTNERS WITH COMMUNITY BRIDGES

Twenty-one volunteers from Community Bridges removed invasive bamboo from Great Falls in November, as part of the C&O Canal Trust's new Canal For All initiative.

The volunteers, which included Community Bridges members and their families, removed an entire patch of bamboo and sent it to the Smithsonian National Institute, which will use it to feed their pandas, apes, and elephants at the National Zoo.

Canal For All was launched in the spring of 2017 with the goal of laying the foundation for a sustainable and robust engagement with African American and Latino communities in Montgomery County, Maryland. This was the second Canal For All event held with Community Bridges, which



PHOTO BY C&O CANAL TRUST

Community Bridges volunteers tackle the bamboo growing at Great Falls as part of the Trust's new Canal For All initiative.

works with 4th-12th graders to empower girls from diverse backgrounds to become exceptional young women by addressing the developmental needs of immigrant and minority girls and their families living at or below the federal poverty level in Montgomery County.

Canal For All is funded by the National Environmental Education Foundation (NEEF).

SWAINS PROJECT AWARDED CENTENNIAL CHALLENGE GRANT

The National Park Service Centennial Challenge Program has awarded the Swains Lockhouse project a \$100,000 matching grant to help fund the rehabilitation of the the 1830s historic lockhouse. This grant, which was supported by Maryland Senators Ben Cardin and Chris Van Hollen, was matched by \$108,160 raised by the C&O Canal Trust, the Friends of Historic Great Falls Tavern, and the C&O Canal Association.

After the rehabilitation is complete, Swains Lockhouse (Lockhouse 21) will join the award-winning Canal Quarters program, a program that has so far provided for the rehabilitation of six historic lockhouses located along the C&O Canal. Swains Lockhouse will be the seventh lockhouse to join the program, and the first rehabilitation undertaken since 2011.

"The C&O Canal National Historical Park is one of Maryland's most beloved landmarks,

generating economic activity and attracting thousands of visitors every year," said Senator Cardin. "This investment in critical park repairs will help keep the C&O safe and accessible for years to come."

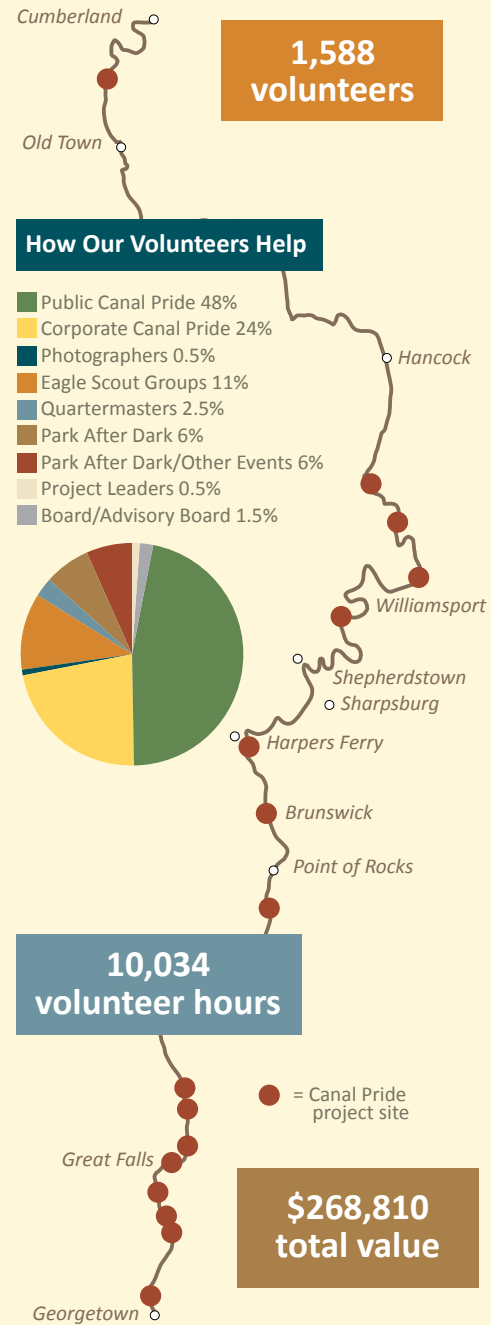
"The repairs funded by this grant and support from friends of the Park will ensure visitors will continue to enjoy the Park's natural beauty and rich history," said Senator Van Hollen.

The \$100,000 comes from the National Park Service Centennial Challenge Program, which distributed \$20 million from Congress to more than 50 park partners to improve trails, restore buildings, and increase visitor access to parks. Grants were given to parks that had friends groups able to match the funds 1:1.

Construction on Swains Lockhouse is set to begin next year. Watch www.canaltrust.org/swains for more information.

VOLUNTEERS PROVIDE OVER \$250,000 VALUE

The C&O Canal Trust manages a large cadre of volunteers who assist with Park preservation and beautification, maintenance of the Canal Quarters lockhouses, project leadership, events, photography, and management. See our 2017 fiscal year (October 1-September 30) statistics and project locations below.



Visit our website to join us as a volunteer in 2018: www.canaltrust.org/volunteer

CANAL QUARTERS: PEACEFUL GETAWAYS CLOSE TO HOME

Have you stayed in one of the Canal Quarters lockhouses? Over 15,000 people from 47 states and three countries have spent a restful night (or three!) in one of the six historic lockhouses lining the C&O Canal.

Our guests marvel at the quaint settings of these small retreats, each of which is decorated with period furnishing to tell the story of a unique time in the canal's history. Visitors are able to enjoy the Park long after the last hiker has left for the day, immersed in a tranquil natural setting, close to home, but so far from the hustle and bustle of the day-to-day grind.

"Walking through the front door transports you back in time 60 years," said guests John and Matt in a hand-written message in a lockhouse guest book. "Remove all of the technology trappings, and you are left with peace and solitude that is rarely experienced this close to the nation's capital."

A partnership between the C&O Canal Trust and the C&O Canal National Historical Park, the Canal Quarters program was conceived as a way to creatively reuse the

historic lockhouses, so they wouldn't fall victim to the elements, mischief makers, or neglect. The idea of preserving the structures and opening them for overnight stays solved multiple problems facing the Park. Not only was it a way to rehabilitate the lockhouses, it also created a distinctive opportunity to provide immersive interpretation about the Canal to visitors.

Stays run from \$110-\$160 a night, depending on the lockhouse, and each sleeps eight people. Weekends book up fast, so be sure to reserve your stay soon, or buy a gift certificate as a perfect holiday gift! Visit the website at www.canaltrust.org/quarters for more detail.



PHOTO BY SUSIE BRUNINGA

Lockhouse 6 in Brookmont.

BOARD'S KATHY POOLE HONORED

Trust Board Secretary Kathy Poole was honored with the Distinguished Volunteer Award from the Western Maryland Chapter of the Association of Fundraising Professionals (AFP) in November. This award honors the advocates, leaders, and mentors whose passion for their causes inspires philanthropic action and community involvement.

"Kathy has leveraged her extensive contacts statewide to bring new major donors to the Trust and to raise its profile in Washington County," Trust President Robin Zanotti said. "Kathy has been an invaluable source of strategic advice and can always be found in the fundraising trenches, soliciting silent auction items and event sponsorships."



PHOTO C&O CANAL TRUST

Kathy Poole (center) is pictured at the awards ceremony with emcee and Trust Advisory Board member Tom Riford and AFP President-Elect Jessica El-Zeftaway

Kathy has served on the Trust's Board of Directors and as its secretary since 2012.

NEW DIRECTORS JOIN BOARD

The C&O Canal Trust recently welcomed new members to the Board of Directors.

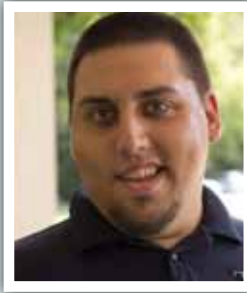
John Schnebly served as the President of Keller Stonebraker Insurance in Hagerstown for 37 years, growing it from a one-man operation to a firm with an annual revenue of \$5 million and 50 employees. He has served two terms on the Hagerstown City Council and one on the Washington County Board of County Commissioners and is currently president of the Washington County Free Library board of trustees. John graduated from Wake Forest University and served in the United States Army Reserves. He and his wife Bobbi own a 19th century farmhouse along Antietam Creek and have two children and four grandchildren. He enjoys bicycling on the towpath and the Western Maryland Rail Trail.

Anthony Stacy is currently a Strategic Operations Consultant at Booz Allen Hamilton and has served as Chief of Staff for The Nature Conservancy's Philanthropy Department. He has also worked in the Ohio State Legislature, developed a school in Bucharest, Romania, for young political leaders, and helped launch two new Habitat for Humanity chapters. He received his Master of Public Administration from The Maxwell School of Syracuse University. Anthony is a runner and outdoor enthusiast and lives in Alexandria, VA, with his wife Deanna and their two children.

Anne Wallace was a trustee on the board of St. Andrew's Episcopal School for 12 years, including four years as the Board Chair. During that time, she led a campaign that raised \$60,000 to build a school in Haiti. She also served for six years on the vestry of St. Francis Episcopal Church in Potomac and is currently a volunteer at Manna Food Center. Anne holds a B.A. in Legal Studies from the University of Massachusetts. She and her husband, Rick, have four grown children. The Wallaces are frequent users of the C&O Canal and are members of the C&O Canal Trust's William O. Douglas Society.

WHITMAN JOINS STAFF

Josh Whitman, who has worked with the Trust as an intern since 2016, has joined the staff as its full-time Volunteer and Program Coordinator.



Josh is well-known to many members of the C&O Canal's volunteer force, as the lead coordinator for Canal Pride Days events in both 2016 and 2017. He is also now working with the volunteer Quatermasters as part of the Canal Quarters program, as well as lending a hand with events and other program-related duties.

Prior to joining the Trust, Josh worked as a Student Conservation Association intern for the C&O Canal National Historical Park, and as Conservation Steward for the Cape May National Wildlife Refuge. He is from Bensalem, PA, and is a Temple University graduate with a B.S. in Environmental Science. In his spare time, Josh enjoys reading and hiking along the canal.

PARK AFTER DARK A SUCCESS

Event celebrated C&O Canal Trust's 10th Anniversary

Over 250 guests gathered on Saturday, September 16, at Historic Great Falls Tavern in Potomac, MD, for the Seventh Annual Park After Dark fundraiser. Nearly \$140,000 was raised to support both the work of the C&O Canal Trust and the C&O Canal National Historical Park's Canal Classrooms program.

We presented two awards to friends of the Trust during the event. Jim Heins received the Canal Pride Volunteer Service Award for

his countless hours of service to the Trust and the Park. Ami Aronson and the Bernstein Family Foundation were awarded the William O. Douglas Stewardship Award for their generous philanthropy to help preserve the Park. Pictured below are Heins (left) and Aronson (right) with Trust Board Chair Mike Mitchell, Park Superintendent Kevin Brandt, and Trust President Robin Zanotti.

Thank you for your support!



Photos from Park After Dark are on our Facebook page at www.facebook.com/CanalFriends.

Photos by Turner Photography

HOPKINS & PORTER PROVIDES HELPING HANDS

The four Canal Quarters lockhouses in Montgomery County are getting a helping hand from design and remodeling firm Hopkins & Porter. The company's founder, Mike Denker, served as one of Lockhouse 22's original Quatermasters—volunteers who help the C&O Canal Trust welcome

visitors and oversee the maintenance of the lockhouses—from the 2009 founding of the program until his death in 2013. In 2015, the company he founded decided to contribute their time and expertise to help maintain the lockhouses Mike loved so well.

support of the Canal Quarters program is a vital component of the program's continued success. With a professional handyman by our side from a highly respected firm rooted in the Montgomery County community for the past 40 years, we know our Lockhouses are in good hands."

The employees of Hopkins & Porter pitch in at Lockhouses 6, 10, 22, and 25, helping with tasks that are either too large or too complicated for the Quatermasters. In the past year, they have helped with painting the interior and exterior of the historic structures, repairing windowpanes, plumbing, repairing porches and screen doors, removing wasp nests, and more.

Office Manager Lamar Christie said "We love that we can support the C&O Canal Trust, and, most of all, we really are pleased that we can support something Mike Denker cared a lot about as well. It helps us preserve his spirit and essence here at Hopkins & Porter. We attribute much of our 40-year success to Mike and the person he was. His character, his love for people, his commitment to living life. We miss him."

Director of Programs and Partnerships Becky Curtis said, "Hopkins & Porter's generous



PHOTO COURTESY HOPKINS & PORTER

A Hopkins & Porter truck outside Lockhouse 10.

2016-2017 HONOR ROLL OF DONORS

The Board of Directors and the staff of the C&O Canal Trust wish to thank all of our donors who have generously supported our work over the last fiscal year.

The following Honor Roll of Donors reflects giving between October 1, 2016 and September 30, 2017. Every attempt has been made to ensure this list is complete.

If we have excluded you in error, please contact Patricia Barber, Director of Development, at barber@canaltrust.org or 301-745-8880.

CANAL xxxxxx \$25,000 and up

The J. Willard and Alice S. Marriott Foundation
MARPAT Foundation, Inc.
National Environmental Education Foundation
REI

CANAL VISIONARIES \$10,000-\$24,999

A.R. Landsman Foundation
The Bancroft Foundation
Paul and Gail Chod*
France-Merrick Foundation
Greater Washington Community Foundation
Lisa Landsman*
Robert Pascal*
Quality Systems and Products, LLC
Richard E. and Nancy P. Marriott Foundation, Inc.
Schwab Charitable
Mark Stover*
Ira and Marcia Wagner*

CANAL EXPLORERS \$5,000-\$9,999

Stephen and June Chaudet*
Clark Construction Group, LLC
Community Foundation of Washington County
Delaplaine Foundation
Estate of Juliet Grant-Suttie
Fidelity Charitable
Freedom's Run
Francis and Carolyn F. Grant-Suttie*
Guest Services, Inc.
John Guttman and Holly Cannon*
The Jewell Foundation
The Kiplinger Foundation
Knight Kiplinger
M&T Charitable Foundation
Mars Foundation
Mary K. Bowman Fund for Historical and Fine Arts
Mike and Sue Mitchell*
Minkoff Development Corporation
Mitchell Family Foundation
Morningstar Foundation
Nora Roberts Foundation

Prince Charitable Trusts
RBC Wealth Management
Deborah Schumann*
Vanguard Charitable
Stan Wiggins and Karen Beth Possner*

CANAL TRAVELLERS \$2,500-\$4,999

James R. and Karen K. Beardsley*
C&O Canal Association
Estate of Hilda Carpenter
Denise and Michael Cetta*
Cliff and Deborah White Family Foundation
Bud and Dell Cline*
Community Foundation of Frederick County
Wm. Randall and Lisa Cone*
John and April Delaney
Sherif Ettefa*
Friends of the Historic Great Falls Tavern
William Grayson
Marcel and Celia Harper
KPMG, LLP
Craig Katz
Edward and Arleen Kessler*
James Menzies*
Network for Good
William B. and Karen O. Newman*
Bruce and Kathleen Poole*
The Poole Law Group
Robert and Dana Reisse*
Renaissance Charitable Foundation
Tom Roberts and Sandra Adams*
Thai McGreivy, MD Fund
Vinod and Maria L. Thomas
Warren Cross Charitable Foundation
Richard B. and Debbie Cross Werner*
Cliff and Deborah White*
Geoffrey Wolfe and Sandy Vogelgesang**+

CANAL PRESERVERS \$1,000-\$2,499

Jose Albertini and Audrey R. Copeland*
America's Charities
Ray and Jennifer Baldwin
Bank of America Charitable Foundation
Simon and Patricia Barber*
The Benevity Community Impact Fund
Peter Bross
John Butman and Patty Lee*
The Buchanan Family Foundation
James G. and Sarah E. Cahill*
Ashby and Katie Chamberlin*
Stan and Linda Collyer*
Becky Curtis*
John Dema*

Bos Dewey and Liz Barratt-Brown
Philip T. Evans and Colleen M. McEnroe
William T. N. and Michele C. Farquhar*
Ferris Family Foundation
Thomas D. and Kathleen L. Fingleton*
Mary Ann Fisher*
Robert V. and Roxanne Fleming, II*
Atalanta T. Grant-Suttie*
Kettner and Dana Griswold*
The Guide Foundation
Jane Guiliano*
Corbin and Pamela Gwaltney*
Paul Hagen and Christine Jahnke*
Hagerstown-Washington County Convention
and Visitors Bureau
Carrie Halpert
Jessie Harris*
Donald and Elizabeth Harrison*
John and Rachel King Foundation
David and Jacqueline Karp*
Russell Kennedy
Mary Kenzie
John and Rachel King*
Robert King and Deena Barlev*
Ted and Grace Anne Koppel*
Lafayette Federal Credit Union
Steven L. and Jacqueline C. Leifer*
Live Like Jack Fund
The Mahley Family Foundation
Robert and Pamela Mertz*
Howard Morse*
Charles A. Murray and Catherine B. Cox*
Matthew and Lillian Nolan
Julia Perlman
Brett and Kirsten Quigley
Ogden M. and Roxana I. Reid*
Rockville Rotary Club Foundation
Tim Shank and Judith Welles*
Elizabeth Schueler
Roy and Ase Sewall*
Dennis S. Shiflet**
Dawinder Sidhu*
Dan and Janette Spedden*
Alan D. Stotler*
Joanna Sturm*
Bert and Amy Swain*
The T. Rowe Price Program for Charitable Giving
Bradley and Jody T. Thayer*
The Trust for Public Land
U.S. Charitable Gift Trust
Viasat, Inc.
Richard and Anne Wallace*
Jonathan Moore Warner
Rick and Sally Warner Watts*
Alfred and Julia Larson Wurglitz*
Mike and Robin Zanotti*

* Individual donors who have given a gift of \$1,000 or more are members of the William O. Douglas Society, our leadership giving society for the C&O Canal Trust.

+ Individuals who have made provision in their wills for the C&O Canal Trust are members of the Potowmack Society.

BOAT CAPTAIN

\$500-\$999

Thomas Akins
Lucy Alexander
Judith Bader
David T. and Sue S. Beddow
Brett Beitzel
Andrew and Kaye Boesel
Steve and Carolyn Bou
Todd and Tracey Bowman
David and Eileen M. Brooks
Denise Brownlee
Frank and Victoria Chang
Cohenterprises, Inc.
Philip and Rosemary Collyer
Bill and Diana Conway
Margaret Cotter
Bob and Peggy Dennis
Caroline Maury Devine
Ray and Dawn Dinterman
John and Mary Jane Euler
David A. Failor
Eric Froehlich
James and Karen Harrison
Patricia Harvey
Alan Heilbron and Kerry Malawista
John and Nancy Ann Holahan
Thomas W. Holland
Susan Howard
Thomas Hudson
Lowell Inhorn and Cynthia Petzold
Diana Jamieson
Michelle Jamrisko
Robin and Laurel Kent
Marc Korman
Joseph Lipscomb and Laura Will
Catherine Luke
Harry and Deb Malone
Michael Mann and Carol Salzman
Marriott International
Keith I. McConnell
Mike McMearty
Jason Michel
Joan G. Paull
Potomac Rotary Charities
Susan D. Rich

Marylouise Roach
Ed Ryan
Harold and Victoria Sakayan
Diane Schaefer
James and Madeleine Schaller
Jaret Seiberg
Gary Sikora and Peg Shaw
Topper and Alison Shutt
James B. Slaughter
Gregory and Ruth Ann Snook
Herb and Jane Stevens
Patrice Taylor
Steuart and Linda Thomsen
Barbara Boyle Torrey
Wantz Distributors, Inc.
Dennis White
Linda White-Weaver
Whole Foods Market
Timothy and Alba Williams
Christopher Wolf
The Wunder Family
Katherine Harding Wunder Foundation
Younger Toyota
Samuel Leo Zimmerman

LOCKKEEPER

\$250-\$499

40 North Services
Ronald Abeles
Richard and Teresa Abrams
William H. and Renee Agnew
John and Annie Allen
Stan and Shelley Balis
Neil and Joan Barkin
Susan L. Beall
Dianne May Bechtold
Donald and Catherine Bellenger
James Biasco
Linda Binsted
Eli Blanks
Bruce and Robin Bortnick
Bou Family Foundation, Inc.
Jack B. and B. Marie Byers
William Byron
Robert Cannon
Tom Chappell

IBM Corporation Matching Gifts Program
International Monetary Fund
Justice Family Fund
Stuart Kanchuger and Arleen Sierra
John Kern and Pamela Walker
Chas and Emily King
Lynne Kuhmerker
Joe Lawler
Richard and Lindsay Leggin
George and Pamela Lewis
Jay and Jane Lewis
Steven and Janet Magel
Daniel Mah and Rachel Hines
Judith Mansfield
Michael and Linda Marmer
Chris and Jane Martens
Henry Roger and Sharon Marlene Mastroni
Luke F. McCabe
Kevin and Laura Miller
Kenneth Millstone
Elisabeth D. Mohler
Michael and Kathleen Moran
Michael C. Nolan
George L. Ohrstrom II
Michael R. and Lisa S. Opsahl
Margaret Percesepe
Robert Peterson
Eric Rice and Sarah Kanchuger
Thomas B. Riford
Hugh Robinson and Marilyn Stone
Bruce E. Rosenblum
Alicia Saffer
Mike Samuelson
Clare Sant
James and Denise Schleckser
Charlie Skuba
Smithsonian Associates
Neil Stormer and Zain Habboo
Christopher Stubbs
David C. and Carolyn C. Stump
Tom and Gretchen Toles
Hall and Deborah Van Vlack
William Walderman
Washington Fine Properties
Mike and Julie Wickersham
Keith Williams
John A. and Margery A. Ziegler
Max Zimmermann

David Cooley
and Marlene J.
Severson
Michaela Daniel
Bruce Davis and
Evelyn Jacob
Deanna Dawson
John Dix
Melanie Draper
Bryan and Laura
Forman
Martyna Fox
Daniel Gallagher
Karen Mary Gray
Anya C.
Grundmann
Jeff and Anne
Gunsteens
William
Holdsworth

CANAL CANAWLER

Up to \$249

Leslie Abbott
Susan Abrahamsen
Aysar Akrawi
Layla Akrawi

PHOTO CONTEST WINNERS

The beautiful photographs included with our Honor Roll of Donors are winning photographs from our monthly Photo Contest. Visit <http://www.canaltrust.org/photocontest> for more details.



PHOTO BY RHONDA FINK-WHITMAN (JULY WINNER)



PHOTO BY WANDA POFENBERGER (AUGUST WINNER)

- Blechman-Morenoff Foundation
- David Bloom
- Stephen A. Bokat
- Michael Bookman and Maria Platia
- Kevin Borg
- Jan Bove
- Robert Boyd
- Garland Bradfield
- Peter Brandriss
- Travis Breaux
- Cara Anjos Breeden
- David Brinkley
- Melissa Brizer
- Rebecca Brock
- Joseph and Susan Brookreson
- Barbara Brown
- Frederick and Janet Brown
- Jessica Lyman Browne
- Michael and Betsy Brunner
- Michael and Judith Bucci
- James and Lise Crafton
- Jill Craig
- Chan Crangle
- Glenn A. Crinnion
- Brian G. and Joan M. Crowe
- Patrick J. Cunniff, Jr. and Katie Eckardt
- David W. Curfman
- David and Janet Curtis
- Dick and Linda Cushwa
- Suzanne Dangler
- Jerome and Patricia Danoff
- Allan P. Davis
- Jacqueline Nina Davis
- Hannah Debelius
- Andrew Dempster
- Anne DeNovo
- Todd Derr
- Vincent G. and Jan Desiderio, Jr.
- Marco and Anne Di Capua
- Jennifer Diehl
- Sylvia Diss
- Lynda DiValentin
- Guy Divita
- Thomas and Phyllis Dobyns
- Herbert L. and Florence L. Doggett
- Douglass and Frances Donnell
- Carrie Donoho
- Richard and Penelope Doolittle
- David Dorsen
- Cinnamon Dornsife
- Emily Douce
- Robert and Nancy Dove
- Michael and Maysoon Dowling
- Susan Duke
- Renee Dunham
- Joe Dunn
- Charles Louis Edson
- Bill Eichbaum
- Eric and Mary Beth Eller
- Roy Elson, Jr. and Cecilia Hage
- Richard Emch, Jr.
- Stephen C. Engelke
- Beth Erdman
- Alan Estevez
- Robert and Katherine Eustice
- Louis Faassen and Justine Dymond
- James C. Failor
- Robert L. Failor
- Joseph and Maureen Fama
- Michael Farrell
- Eddie Farrey
- Diane Feinberg
- Tracie Felker
- Aaron Ferguson
- Valerie Fernandes
- Robert L. and Camille A. Filling
- Nancy L. Finkelstein Family Trust
- John W. Fischer
- Eric Fisher
- Martha Fisher
- Amy Flashenberg-Laskowski
- Peggy Fleming
- William and Nancy Foster
- Denise F. France
- Steve and Marie France
- Carl E. and Charlotte A. Frasch
- Gail Frazer
- Frederick CTC FFA Alumni, Inc.
- Helen French
- Mayo and Pearl Friedlis
- Scott and Paula D. Frishman
- Clifford and Kerstin Gaddy
- David and Allison Garman
- Shelley Gaskins
- Lynda Gattozzi
- Joseph and Mallory Gay
- Susan Marie Gemeny
- Kenneth George
- Margaret Giddens
- Richard Gilbert
- Alan C. Gill
- Gregory and Becky Gill
- John W. and Tammy Duke Gill
- Limja H. Gim
- Jade Gingerich
- Barbara Gingrich
- Jefferson Glassie
- Lois C. Glatfelter
- Matthew Goedecke
- B. G. Goff
- Michael and Karen Goger
- William P. Golden
- Kenneth Goldman and Barbara Sadick
- Susette Gongola
- David Good and Lori Nicolle
- Carol Goodloe
- Saul Goodman
- Joseph Gorney
- Megan Gottemoeller
- Michael and Lee H. Gough
- Alan Gourley and Sarah Brown
- Valerie Gracechild
- Gene Granof
- Barry Greenberg
- Bentley and Susan Gregg
- Meredith Griggs
- Laura Grinnan
- Joseph Grogan
- Marc Grossman
- Linda and David Groverman
- David P. Grum
- David Robert Guinnup
- Tom Gutierrez
- H. Gerald and Jane S. Guyton
- Joseph Hage
- Kate Hage
- Peter Hage
- Richard and Kathleen Hage
- Kim Hagemann
- Gregory M. Hall
- Ellen Hamburger
- Cameron Hamilton
- David Hamilton
- Suzanne Hamilton
- Sarah Hammack
- Wade Hampton
- Dan and Anne Handel
- Elizabeth Handley
- David Handzo and Mary Dodson
- Peter and Debra Hanley
- Kelvin Hao
- Jonathan Hardis
- Charles D. Harris
- Barbara Harrison
- Stephen Harrison
- Steven Harrison
- Benjamin Hart

- Rajha Al-Hashmi
- James R. Alden
- Gary and Barbara Allen
- William G. Allman
- Amazon Smile
- Jon M. and Heidi H. Anderson
- Mark J. Andrews
- Anonymous (22)
- Gary Anthes
- Tim Arcano
- Lucinda Bach
- Thomas H. and Barbara P. Bailey
- Philip Baldyga
- Joanne and Edward E. Balkovich
- Giovanna Ban
- Bonnie Bandolin
- Lawrence and Patti Bandolin
- Robert Bannister
- Andrea Baridon
- Charlie Barnett
- Richard and Carol Barron
- Susanne Barsoum
- Mary Bartles
- J. Mel Bass
- Karen Bass
- Hugh and Molly Baumgardner
- Beans in the Belfry
- Arthur and Sandra Becker
- Paul Beckerman
- Hedrick Belin and Mary Bissell
- Bruce and Susan Bender
- Robert and Jody Benjamin
- Kimberly Benson
- Zdenek Beranek
- Philip and Toby Berman
- Robert L. Bertera
- Blake Biles and Laura Sessums
- Bill and Melinda Gates Foundation
- Mark Binsted
- Norman W. and Carol A. Birzer
- David Bishop
- James Blair
- Mike Blalock

- Marian Burros
- John Butler
- William and Marion Butler
- Derek and Laura Byerlee
- Beverly Byron
- C. Weichel and Associates
- Cabin John Memorial VFW Post 5633
- Courtney Caldwell
- Barbara Cantey
- Leslie Carter
- Jon Carver
- Richard P. Cember
- Jeffrey W. Chaloupek
- Chesapeake Bay Area CFC
- Brent and Janice Chippendale
- Rich and Claudia Chitty
- Choate Hall & Stewart, LLP
- David S. C. Chu and Laura L. Tosi
- Wayne Clark
- Charles and Barbara Clements
- Paul and Joan Cleveland
- Timothy Clifford
- Galen and Sandy Clipp
- Sheila S. Cochran
- Alan and Deborah Cohen
- Barry Cohen
- Kenneth Cohen
- Paul Cohen
- Andrew H. and Suzanne J. Colby
- Timothy Collyer
- Michael Colson
- John and Mary Conaghan
- John Cone
- Consumer Healthcare Products Association
- Pamela S. Cook
- Ross Cook and Carol Becker
- James J. and Kathleen M. Cooney, Jr.
- Glenn and Jacqueline Cooper
- Mary Cooper
- Jim Cope
- Nessa Coppinger
- Heather Dawn Coxon

James D. Hathaway
 Diane Hauslein
 Mary E. Hawkins
 Michael Edward Heaney
 B. Carter Hearn, Jr.
 Peter Heinlein
 William Hendricks
 Steven Herman and Susan Deller Ross
 Gerald W. and Doris J. Hiler
 Katherine Hillas
 Katherine Himes
 William Hines
 Karen Hinson
 Kathryn B. Hokenson
 Spencer Hoopes
 William and Louise Hopewell
 Denise Horner
 Joseph T. and Mary M. Howard
 Ronald Howard
 Elizabeth Howe
 Forest Howell
 Amanda Hren
 Tomi Hsiao
 Ray Hubbe and Ginger Burns
 Stephen Huber
 Ann Marie Huisentruit
 Terence Hurley
 Susan Straka Ingard
 Charles C. Isleib
 Richard H.F. Jackson
 Michael J. Jacobs
 Robert Jacobs
 Gregory James
 William James
 N. Jamieson-McGuire
 Keith and Tari Janssen
 James E. and Barbara Jarboe
 Barbara Jenkins
 Jewish Federation of Greater
 Philadelphia
 The Joe W. II & Marg M. Fleming
 Trust
 Carrie Johnson
 Wayne and Beverly Johnson
 James and Karen Johnston
 Kuriacose Joseph
 Judith Kahan
 Donald A. Kaplan
 Warren Kaplan
 Evelyn Karson
 Paul and Jerri Karstetter
 John Kean
 Linda Kean
 Mary Kearney
 Keedysville Historical Society
 Barbara Keller
 Keller Stonebraker Insurance, Inc.
 Marisol Kenman
 George Kennett
 Craig R. and Bonnie L. Kern
 Michael Kershow and Marianne Keler
 Robert H. Kessler
 Jerry Kickenson and Kathleen Michels
 Roberta Kilduff
 John J. and Anne C. Killeen
 Tom Kimbis
 G. Russell Kincaid
 Bonnie Kind
 Jack and Julie Koczela

David L. Koeberlein
 Kathleen Koehler
 Leslie Koo
 Trudy Koslow
 Jeffrey Kover
 Steven Kover
 Elliot Scoville Krafusur
 Robert Kramer
 Caroline Kreiger
 Amy Kresge
 Joe Kresse
 Kathy Krieger
 John Krusberg
 Melissa Krut
 Patty Kuehl
 Gail Kulisch
 John Kun
 Cameron Lane
 Douglas W. and Rebecca
 Massie Lane
 Joseph Laukaitis and Lya Karm
 Susan Lazarus
 Marjorie Leach
 Monica Leas
 Marilyn Joy Leeseberg
 Mary Leibolt
 Donald E. and Marjorie A. Lentzen
 Bret Leslie and Karen Stern
 Elliott P. Levine
 Kristal Levine
 Richard and Mary Alice Levine
 Denise Levitan
 Wayne and Vicki Lindgren
 Robert and Susan Loewy
 Matthew Logan
 Eric London
 Benjamin Alan Lownik
 Allen Loyd
 Virginia Luster
 Robin Lynn
 Brian Mackey
 Andrew Macomber
 Claudine Maggio
 C. Peter Magrath
 Shelley Malusky
 Louis and Edythe Manza
 Norman S. Marks
 Kay Marrill
 Maryland Charity Campaign
 Stephanie L. Mason
 Julie Masters
 Steven and Andrea Matney
 Nancy L. Matthews
 Elliot Maxwell
 Patricia Mayernik
 Alice E. Mayo
 Virginia Mayo-Drane and
 Trala L. Downer
 Kieran Mays
 Harrison and Alice E. McAlpine
 Lindsay McAuliffe
 Dennis D. and
 Diane K. McCarthy
 Alan and Heather McCarty
 Mirela McDonald
 Christine M. McGroarty
 William and Diane McGurgan
 Michael L. McInnis
 David McKibbin

Christine McKinnon
 Jacqueline R. McMahon
 David P. McMasters
 Paul Meehan
 Dale and Elizabeth Meers
 John D. Meier
 Pete and Sue Mekkelson
 Calvin and Margaret Melaney
 Barry and Susan Merritt
 Andrew Metcalf
 Erik and Claire Meyers
 Marlin E. Meyers
 Joseph Kirk Michael
 Lissah Michalski
 Clyde Miller
 Craig and Ilene Miller
 Daniel Mills
 Doug and Marilyn Mitchell
 Star Mitchell
 Kathleen Mogelgaard
 Brian Orger
 Jean F. Montgomery
 Daniel Moore and
 Joanne Goodrich
 Thomas Moore
 Judith B. Morenoff
 Dennis E. and Monica Morris
 James F. Morris
 Alan and Karen Moshel
 Motorola Solutions Foundation
 Allan Moyer and
 Nancy Kramer Moyer
 Judith Mroczka
 John Muller
 Cathy Munday
 Bruce Musicus
 Tom and Katherine Myers
 David Mykita and Victoria
 Commins
 Richard and Pamela Nadler
 Thomas Nardone and Edith Lam

Darwina L. Neal
 Peter Neal and Carolyn Smith
 Jane Neff
 James and Ann Nelson
 Jim Nelson
 Carol Nerenberg
 Allen and Kathleen Newcomb
 Donna Newcomer
 John and Barbara Newland
 Karen Nordenholz
 Esther North
 Brad Northrup and Jody Bolz
 Ronald S. and Linda F. Nosalik
 Mia O'Connell
 Jennifer Oehme
 Frederick Ohly
 Devin Olden
 Thomas and Kandra Olsen
 John Opitz
 Brian Orger
 Jeffery George Orner
 Coreta Osborne
 Nicholas Panebianco
 Mark Pankin
 Melissa Pappas
 Teresa Papproth
 Mary Jo Parrino
 Richard and Ann Patch
 Don Patterson
 Linda J. Paulson
 Julie Pavlin
 Paypal Giving Fund
 Jonathan and Karen Peck
 Hal Perez
 Sean Perkins
 Eric Pfeifer
 Hermina Pfeifer and Gerda
 Keiswetter
 Pam and Ray Pfeiffer
 Gerald and Janet Pietsch



PHOTO BY DAINA BOLSTEINS (OCTOBER WINNER)

Jon Pike, DDS and Diana Gaviria, MD
 Ron and Patricia Pilling
 J. Richard and Martha Pine
 Steven G. Pines and
 Mary G. Thompson
 Jon Piper
 Michael and Suzanne Pisula
 Robert J. and Suzanne E. Plum
 David L. and Barbara A. Plume
 Jean Poe
 Richard W. Pollard
 Valerie Pomper
 Potomac 10 Questors
 Clarissa Potter
 Jeff and Ann Powers
 John Pringle
 Michael and Carolyn Prudich
 Stuart Prymas and Melissa Mulreany
 Sandra Purohit
 Jonathan Putnam
 Peter Quinn
 Gustav Raggambi
 Carol Randell
 Richard J. Reed and Susan Zweighaft
 John and Terry Reimer
 David and Martha Reitman
 Rob Renard and Ame Stormer
 Lynn Reynolds
 William and Ines Rhoads
 Ed and Linda Rhodes
 John Shipley Rice
 Tom and Lori Richichi
 Stephen H. and Bette Ries
 Hyunho Ro
 Robert A. and
 Marjorie Cohen Robbins
 Toni Robinson
 Gregory Rockett
 Juliet Rodman
 Mark and Erika Rolufs
 Elisabeth Rood
 Mark Alan Rosen
 Robert Rotunno and
 Sabrina Pacifici
 Thomas Rozzelle and Susan Fallon
 Robert J. and Fran A. Rubin
 Rachel Rudy

Sheila Ryan
 Niklaus Salafsky and Julia Segre
 Charles A. and Donna N. Salcetti
 Andre and Talia Sattler
 Laurence J. and Catherine M.
 Sauter, Jr.
 Robert Schackmann
 Marsha Scherbel
 Heidi Glatfelter Schlag
 Vern Schrum
 Steven Schupak
 Edward and Joan Schupp
 Kevin Schwartz
 Eric Schweitzer
 Sumeet Seam
 John F. Seitz
 Guy and Dana Semmes
 Michael Sendar and Louann Sinclair
 Thomas Shaffer and
 Karen Vander Linde
 Judith Weil Shanks
 William Shaw and Anne Vorce
 Sue Shays
 Julianne Shinnick
 Joe and Julie Siler
 Mickie Simpson
 Peter Simpson and Penny Mills
 Martha Sinclair
 Dana G. and Lisa M. Sippel
 Renee Sklarew
 Larry B. Slagle
 Albert H. Small
 Janet M. Smith
 Susan Smith
 Steven Snyder
 Mark Sofman
 Lee A. and Pamela L. Sollenberger
 Lafe E. Solomon
 Elaine Southwick
 James Spangenberg
 William and Stacey Sperow
 Martin Spicer
 Sarantes and Deborah Spiliotopoulos
 Arthur B. Spitzer and
 Elisabeth K. Boas
 Dawn Stallard
 Tom and Evelyn Stanford

Dwane Starlin
 Edwin and Beverly Stennett
 Yale and Elaine Stenzler
 Carol Stern
 Lawrence Stipek
 Harry and Kendall Storm
 Janet Stotsky
 Grace A. Stover
 Sally Strain
 Robert Strauss and Miriam Schneider
 Walt Stull and Diane Ellis
 Glenn Summers
 Richard E. and Gloria L. Summers
 Philip and Margot Sunshine
 Richard Swartzlander
 John Sweet
 Donald L. and Christine H. Sylvester
 Holly Syrrakos
 James Patrick Taggart
 Christopher Tai
 Jeffrey J. Tarbert
 Teetsel & Jacobs Charitable Fund
 James Thomas and Kimberly
 Warner O'Malley
 Duncan Thomson
 John Thornton
 Daniel C. Tiedge
 Steven and Christine Todd
 Lynn S. Todorov
 Kenneth and Rachel Towbin
 Jane Towler
 Fawn Triana
 Kenneth and Teresa Troxell
 Frederick and Lois Turco
 Zachary Twining
 United Health
 United Way of the National
 Capital Area
 Kenneth A. and Lynn Untied
 Dilawar and Lois Uthman
 John S. and Kathy K. Uzzo
 Matthew Valvano
 Alexandra Vance
 Thomas Verratti
 George and Dorothy Voris
 Osborne and Betty Wachter
 Dan and Yon Wacker
 Adam and Kathleen Wagenbach
 Elizabeth Walker
 Hilary Walsh
 Robert R. and Nadja Ward
 David and Debora Warrenfeltz
 Kenneth A. Webb
 Carl Weichel
 Donald L. and Eva L. Weigel, Sr.
 Thomas Weil
 Laura Weinhold
 Harry and Joan C. Weintrob
 Deidre Wellwood
 Gene M. Wentz
 Robert A. Westgate and
 Fiona Sigalla
 Douglas and Heather Wheeler
 Masako White
 Joshua Tyler Whitman
 Amy Wickenheiser
 Jarrett Wicklein
 Scott Wilets/Wilets Architecture, LLC
 Gary A. Wilhelm

Marvin Wilke
 Jennifer Williams
 Noel Williams
 Robert Williamson and
 Caryl McNeilly
 Malcolm Wilson
 Ronald Wilson
 Steve and Elaine Wishnow
 Paul Woods and Johnna Armstrong
 Paul Work
 David Wright
 Margaret Wright
 George Wyeth and Julie Greenberg
 James T. Yenckel and
 Sandra L. Lafevre
 Kenneth Young
 Your Cause, LLC
 Steven and Ina Zimmerman
 John and Elizabeth Zinner
 Carl Zmola
 Vasyil W. Zuk and Gloria A. Capik

MEMORIAL GIFTS

*In memory of Robert Joseph
 Anderson, Jr.*
 Joseph Kirk Michael
In memory of Oveland Asbury
 Marvin Wilke
In memory of Randy Astarb
 Family and friends of Randy Astarb
In memory of James D. Cope
 Consumer Healthcare
 Products Association
 Jim Cope
 James and Karen Johnston
 Kenneth A. and Lynn Untied
*In memory of Robin Crangle, my life
 canoe partner*
 Chan Crangle
In memory of James E. Curfman
 David W. Curfman
In memory of William R. Failor
 James C. Failor
 Robert, Steven, and David Failor
 Frederick CTC FFA Alumni Inc.
 H. Gerald and Jane S. Guyton
 Gerald W. and Doris J. Hiler
 Darwina L. Neal
 Lee A. and Pamela L. Sollenberger
 Glenn Summers
 Richard E. and Gloria L. Summers
*In memory of Doug Farris and Dick
 Stanton*
 Joe Lawler
In memory of Ann Tracy Fisher
 Mary Ann Fisher
In memory of Juliet Grant-Suttie
 Atalanta T. Grant-Suttie
 Francis and Carolyn F.
 Grant-Suttie
 Ogden M. and Roxana I. Reid
In memory of William Curtis Grayson
 Family of William Curtis Grayson
In memory of John M. Hartz
 Wilets Architecture, LLC
In memory of Susan V. Henley
 John Krusberg
In memory of Cora and Roy Hoopes
 Spencer Hoopes



PHOTO BY KELD WICHMANN MOELLER (SEPTEMBER WINNER)

In memory of Joyce P. Jakubowicz

Tom Chappell
Valerie Fernandes
Dan and Anne Handel
Susan Straka Ingard
Roberta Kilduff
Mirela McDonald
Richard and Pamela Nadler
Lillian and Matthew Nolan
Michael C. Nolan

In memory of Nancy Hewitt Katz
Craig Katz

In memory of Philip T. McCusker, Jr.
Jacqueline Nina Davis

In memory of Edward Morenoff
Blechman-Morenoff Foundation

In memory of Hans Muller
John Muller

In memory of Tina Ohly
Frederick Ohly

In memory of George and Betty Orner
Jeffery George Orner

In memory of Jennie and Mason Payne
Jennifer Oehme

In memory of H. Jack Price, Sr.
Jennifer Williams

In memory of Rachel
Sylvia Diss

In memory of Andrew S. Reisse
Robert and Dana Reisse

In memory of Dr. David Ross and Dr. Jay Slotkin
Paul Cohen

In memory of Ed Sanderson
Mark Binsted

In memory of Irene Severson
Marlene J. Severson and

David Cooley

In memory of Samuel Lucas Smith
Susan Smith

In memory of Charles M. Stover
Grace A. Stover

In memory of Tejin Thomas
Vinod and Maria L. Thomas

In memory of Gloria Elizabeth White
Linda White-Weaver

In memory of Wussie, Samantha, Silverado, Pretty Kitty, Diamond, Miss Torti, Little Eddie, BBC, Cookie, Tootsie, and Boo Boo
Jane Neff

In honor of Daniel Burke
Tomi Hsiao

In honor of Linda Collyer
Timothy Collyer

In honor of the Coxon and Walsh families
Hilary Walsh

In honor of John Fox
Martyna Fox

In honor of Francis Grant-Suttie
Robert V. and Roxanne Fleming II

Michael Sendar and Louann
Sinclair

In honor of Joe and Mary Hage – Canal by Canoe 2017
Richard and Kathleen Hage

In honor of Peter Harnik
The Trust for Public Land

In honor of Eve Jenkins
Barbara Jenkins

In memory of Robert Kanchuger
40 North Services LLC

Margaret Cotter
Stuart Kanchuger and

Arleen Sierra
Kenneth Millstone

Eric Rice and Sarah Kanchuger

In honor of the pleasure Ted has gotten over the years walking thousands of miles on the Canal
Ted and Grace Anne Koppel

In honor of Sheila Leas
Monica Leas

In honor of Janet D. Lyman
Jessica Lyman Browne

In honor of Marathon Charity Cooperation
Nicholas Panebianco

In honor of Marriott International - Hotel Meeting and Support Services Team
Marriott International

In honor of Henry R. Mastroni and scouting
Henry Roger and Sharon Marlene Mastroni

In honor of Alexander B. McFarlan, Superintendent of Mouth of

Monocacy Aqueduct
Thomas Rozzelle and Susan Fallon

In honor of Michael C. Mitchell
Linda and David Groverman

Jack and Julie Koczela

In honor of Park After Dark VII
Edward and Arleen Kessler

In honor of Bernie Patlen's 90th birthday
Kristal Levine

In honor of Heidi Glatfelter Schlag
Lois Glatfelter

In honor of Linda and Terry Sweeney
Jon Carver

In honor of Bill and Camile Szymczak
Dennis White

In honor of Judith Welles
Potomac 10 Questors

BENCHES

In memory of Randy Astarb
Mile 42.2 - Monocacy Aqueduct by his family and friends

In memory of Hilda Carpenter
Mile 14.4 - Great Falls by her estate

In memory of William Curtis Grayson
Mile 7 - Lock 7 by his family

In honor of Peter Harnik
Mile 3.6 - Capital Crescent Trail by the Trust for Public Land

In honor of Robert Kanchuger
Mile 12.6 - Widewater by his family

In memory of Nancy Hewitt Katz
Mile 7.6 - Cabin John Bridge by his family

In memory of Andrew S. Reisse
Mile 12.3 - Anglers Bridge by his family

In memory of Tejin Rafael Thomas
Mile 5.4 - Lock 6 by his family

In memory of James W. Werner
Mile 12.7 - Widewater by

his family

CANAL PRIDE SPONSORS

Todd and Tracey Bowman
Community Foundation of Frederick County

FedEX
Friends of Historic Great Falls Tavern

Guest Services, Inc.
Keller Stonebraker Insurance

Lafayette Federal Credit Union
M&T Bank

Marriott International
Minkoff Development

National Environmental Education Foundation

The Poole Law Group
REI

Greg and Ruth Ann Snook
Wantz Distributors, Inc.

Younger Toyota

PARK AFTER DARK SPONSORS

A.R. Landsman Foundation
Clark Construction

Bos Dewey and Liz Barratt-Brown
Friends of Historic Great Falls Tavern

The J. Willard and Alice S. Marriott Foundation

Jewell Foundation
KPMG, LLP

The Kiplinger Foundation
Minkoff Development Corporation

Quality Systems and Products, LLC
RBC Wealth Management

Tom Roberts and Sandra Adams



C&O CANAL EXPLORER MOBILE APP PUTS PARK IN YOUR POCKET

The C&O Canal Explorer mobile app is available! The C&O Canal Trust launched the new app in July, making it available to both iPhone and Android users through the Apple and Google stores for a \$0.99 download fee. It can also be downloaded from our website at www.canaltrust.org/app.

The app includes over 600 points of interest located in the C&O Canal National Historical Park. Each point of interest is pinpointed on a map, allowing visitors to see the various options available to them while they explore the Park. Parking lots, picnic areas, restrooms, and water pumps are designated with icons for easy location of these amenities.

The app has geolocating services and will show you where you are on the map, based on your phone's GPS tracking. It will also calculate the distance either up- or downstream to reach the nearest points of interest.

TRIBUTE GIFTS

In honor of Dr. Tim Arcano for his years of service to the United States Navy, and as a tribute to his dedication and leadership as Technical Director of the Naval Surface Warfare Center, Carderock Division,

The participants of the LEAD program he started and mentored

In honor of Boy Scout Troop 50 - Newark, Delaware

David Robert Guinnup

In honor of Victoria and Raymond Breeden

Cara Anjos Breeden

In honor of Allen Browne
Guy Divita



C&O CANAL TRUST
1850 DUAL HIGHWAY, SUITE 100
HAGERSTOWN, MD 21740



SUPPORT THE TRUST

Make a gift that will help protect, restore, and promote the extraordinary resources of the C&O Canal National Historical Park by visiting www.CanalTrust.org today!



'Tis the Season!

Looking for a unique gift for the person who has everything?

Give a Canal Quarters
Gift Certificate

or an

2018 Calendar

www.CanalTrust.org/shop



THE CANAL QUARTERLY IS PRINTED ON 50% POST-CONSUMER RECYCLED PAPER