



# THE CANAL QUARTERLY

WWW.CANALTRUST.ORG



PHOTO BY C&O CANAL TRUST

## SAVE THE DATE: 6th Annual Park After Dark

Everyone loves a great party — especially one hosted along the beautiful C&O Canal! This year, our Sixth Annual Park After Dark fundraiser promises great food, tasty libations, and lively music. A hot ticket for its unique atmosphere, Park After Dark serves as the Trust's largest fundraiser. Proceeds of the event will fund Trust operations and our Swains Lockhouse rehabilitation.

Tickets for Park After Dark will go on sale in June.

Corporate sponsorships are also available for Park After Dark. Contact Director of Development Patricia Barber at [barber@canaltrust.org](mailto:barber@canaltrust.org) or 301-745-8880 for more information.

**Saturday,  
September 17,  
2016**

## REHABILITATION WORK ON SWAINS LOCKHOUSE UNDERWAY

Over the winter, the staff of the C&O Canal Trust and the C&O Canal National Historical Park have been hard at work planning for the rehabilitation of Swains Lockhouse 21. After work is complete, it will join our award-winning Canal Quarters program as the seventh lockhouse available to guests for overnight stays. Swains Lockhouse, located in Potomac off River Road, sits at a very popular Park access point. People who grew up in the area remember the Swain family, generations of whom worked for the canal — from helping to build it to serving as long-time lock keepers. After the canal closed, the family opened a concession stand at the lockhouse.

Several of the Park's friends groups are partnering to fundraise for this project, with the Trust committed to raising \$75,000 of the \$300,000 total. The Friends of Historic Great Falls Tavern and the C&O Canal Association are teaming up to raise another \$25,000; the remainder of the costs will be funded by the Park.

As fans of the Canal Quarters historic lockhouses are aware, each lockhouse depicts a different time period in canal history, and Swains Lockhouse will be no different. It will depict the year 1916, which is relevant for several reasons.

First, it is the year the National Park Service was founded and helps us celebrate their Centennial year!

Secondly, the 1910s were a transformative time for the canal, as it was no longer a profitable mode of transportation. In part because of the formation of the National Park Service, the nation had a new interest in tourism, and this gave the canal new purpose as a place for visitors to tour and recreate. After the canal closed to boat traffic in 1924, the Swains tapped into the new tourism trend by opening a concession stand that rented boats, canoes, and bicycles to outdoor enthusiasts.

*continued on page 3*

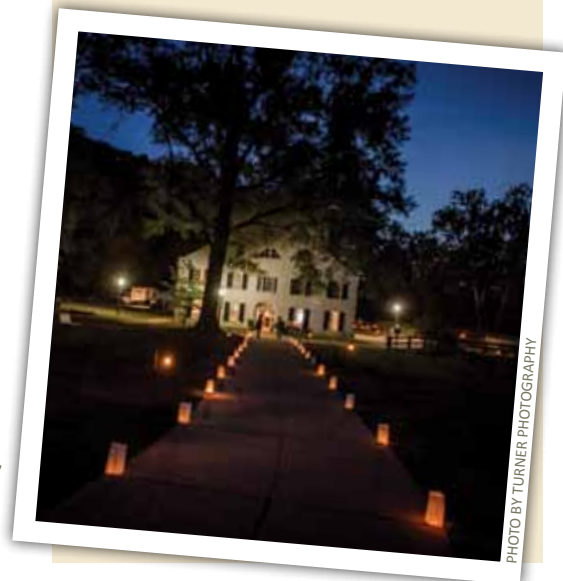


PHOTO BY TURNER PHOTOGRAPHY

## BOARD OF DIRECTORS

CHAIR Michael C. Mitchell  
 VICE CHAIR Stephen E. Chaudet  
 TREASURER Linda Collyer  
 SECRETARY Kathy Poole  
 Sandra Adams  
 William Randall Cone  
 Sherif Etefa  
 John S. Guttman  
 Donald Harrison  
 Edward J. Kessler  
 Bill Newman  
 Tim Rowland  
 Dan Spedden  
 Sandy Vogelgesang  
 Judy Welles

## ADVISORY BOARD

Linda McKenna Boxx  
 Barb Buehl  
 William "Bud" Cline  
 Dennis Hudson  
 Leigh Kessler  
 Joseph M. Lawler  
 Robert Anton Mertz  
 Wilke Nelson  
 Donna Newcomer  
 Penny Pittman  
 Paula Reed  
 Kurt Redenbo  
 Thomas B. Riford  
 Anthony Stacy

## STAFF

PRESIDENT  
 Robin Zanotti, ACFRE  
 DIRECTOR OF DEVELOPMENT  
 Patricia Barber  
 DIRECTOR OF PROGRAMS &  
 PARTNERSHIPS  
 Becky Curtis  
 DIRECTOR OF COMMUNICATIONS  
 Heidi Glatfelter Schlag  
 OFFICE ADMINISTRATOR  
 Jane Neff  
 COMMUNICATIONS/DEVELOPMENT  
 ASSOCIATE  
 Melanie Draper

# A NOTE FROM THE PRESIDENT

It is my sincere hope that as you read this, Mother Nature will have relented and provided us with a lovely spring. You are likely as eager as I am to enjoy the towpath, maybe some fishing, hiking, biking, or water sports. As you know, our C&O Canal provides a variety of ways to enjoy the wonders of nature. Don't be discouraged by the rainy days; they will give way to sunshine and lush vegetation to enjoy along the way.

We have been gearing up for what we call "the season", where we welcome the majority of our park visitors. In the following pages you'll read that more than 300 C&O Canal Trust volunteers will be sprucing things up for your enjoyment during our Ninth Annual Canal Pride Days events. Trust staff will be working with a smaller number of skilled volunteers to install a bridge at the Marsden Tract. And the Trust and the Park have been collaborating on plans for rehabilitating Swains Lockhouse, which we are eager to fold into our award-winning Canal Quarters program.

We have also started to plan our fundraiser, Park After Dark. Scheduled for September 17 this year, it is our largest fundraising event and last year, raised over \$90,000 to support Trust and Park programming. Please make plans now to join us this year for this unique event, held under the stars along the Canal at Historic Great Falls Tavern.

We have also been busily reaching out to those who value and appreciate the Park and Trust, asking for their support in making these and other projects possible. I am personally gratified by your generous response to our requests. There is no shortage of individuals, approaching five million, who enjoy this amazing resource annually. If you aren't a donor to the Trust yet, please consider joining the team dedicated to protecting and preserving this national treasure.

Happy Spring! We're looking forward to seeing you in the Park.



Robin Zanotti, Trust President

## I SUPPORT THE C&O CANAL!

### Giving Levels:

Canawler (up to \$250), Lockkeeper (\$250-\$499), Boat Captain (\$500-\$999)  
 William O. Douglas Society – Canal Preserver (\$1,000-\$2,499), Canal Traveler  
 (\$2,500-\$4,999), Canal Explorer (\$5,000-\$9,999), Canal Visionary (\$10,000+)

\_\_\_ \$50 \_\_\_ \$100 \_\_\_ \$184.50 \_\_\_ \$500 \_\_\_ \$1,000 \_\_\_ Other \_\_\_\_\_

Please make your check payable to the C&O Canal Trust.\*

Name: \_\_\_\_\_

Address: \_\_\_\_\_

E-mail: \_\_\_\_\_

### FOR CREDIT CARD DONATIONS ONLY:

Please charge my: \_\_\_ VISA \_\_\_ MasterCard \_\_\_ Discover  
 \_\_\_ American Express

Credit Card #: \_\_\_\_\_ Exp. Date: \_\_\_\_\_

Signature: \_\_\_\_\_

Telephone #: \_\_\_\_\_

The C&O Canal Trust is a 501(c)(3) non-profit organization. Donations to the Trust are tax-deductible to the fullest extent of the law.

Phone: 301-714-2233

\* MAIL TO: C&O Canal Trust, 1850 Dual Highway, Suite 100, Hagerstown, MD 21740

ONLINE: Make a secure donation online at [www.CanalTrust.org](http://www.CanalTrust.org)



## Swains continued from page 1

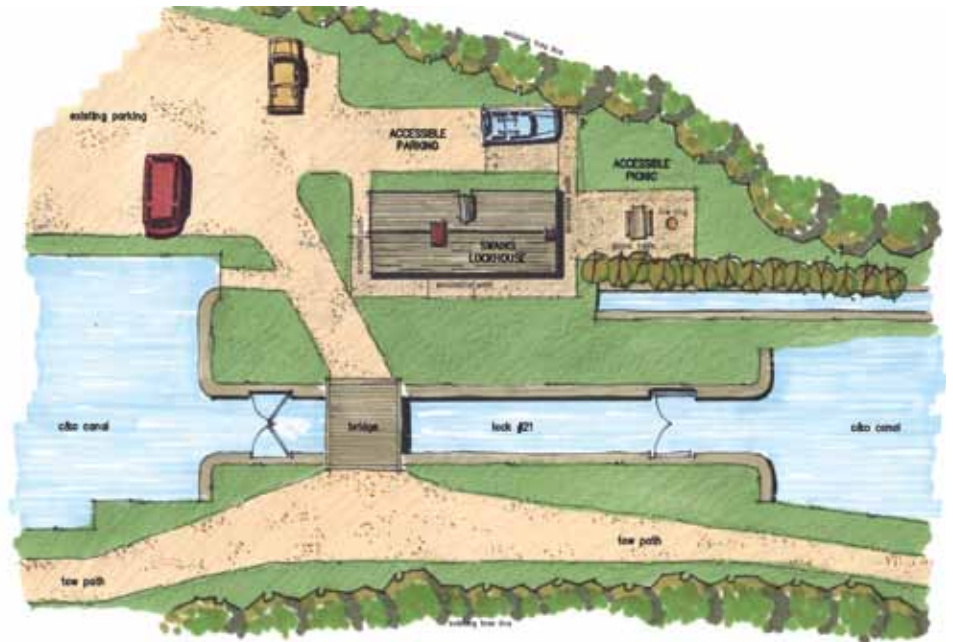
“The 1916 era speaks to the theme of resiliency and reinvention as the world changes; so does the canal and those who are most intimately impacted.” said Catherine Bragaw, Chief of Interpretation for the C&O Canal, who is leading the team charged with the interpretation of the lockhouse. “This time period allows modern amenities, beautiful furnishings, and fashions that speak to the changing world.” Aiding Bragaw is intern Ellen Blackmon, a student from James Madison University, and volunteer and former Board member Robert Mertz, who helped the Trust furnish the six completed lockhouses and will lend his talents to Swains as well.

While the interpretation team keeps busy, Park personnel from maintenance, cultural resources, safety, and law enforcement have been meeting monthly with historic preservation architects and engineers from the Historic Preservation Training Center (HPTC), which has been hired to do the project’s construction. HPTC is based in Frederick, MD and employs professionals skilled in historic preservation. So far, site plans have been developed (at right), as well as much more detailed architectural, electric, and plumbing schematics. Site work should begin in the next few months.

This lockhouse will be unique in that it will also feature a space for Canal Classrooms programming. The upstream room on the first floor can be used for dining by guests, but can also be used as an activity space for students visiting the lockhouse. Combined with outdoor activities, the indoor space will allow students to see how lock keepers lived during the canal era and witness their working class lives, something students don’t often encounter because most historic house museums showcase the lives of the wealthy.

You can follow the rehabilitation of Swains lockhouse on our dedicated website, [www.CanalTrust.org/Swains](http://www.CanalTrust.org/Swains), where we blog weekly about the progress being made. We also cover other topics including the history of the Swains family, the nuts-and-bolts of how a rehab comes together, and interviews with the professionals who are bringing the lockhouse to life!

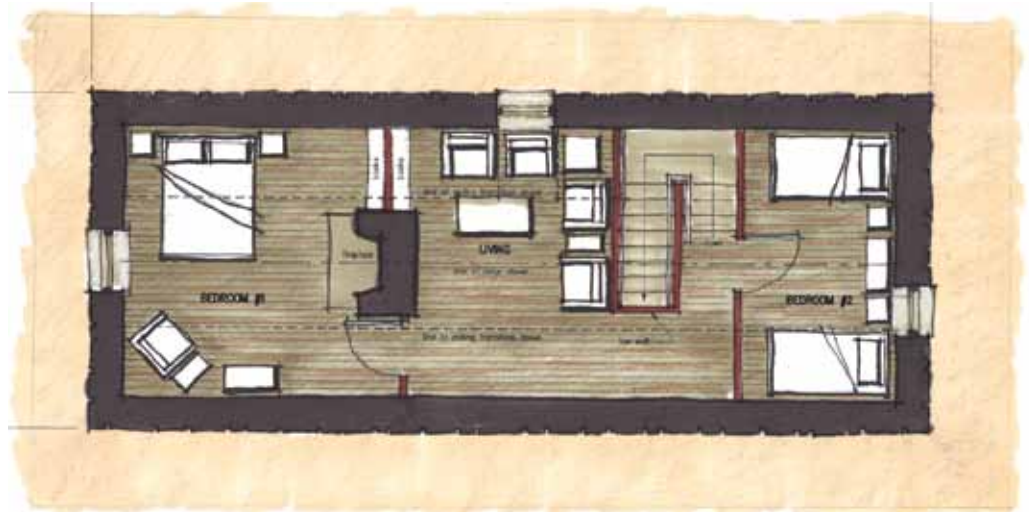
If you are interested in contributing to the Swains Lockhouse project, please contact Director of Development Patricia Barber at 301-745-8880 or [barber@canaltrust.org](mailto:barber@canaltrust.org).



*This site plan drawing shows how the area around Swains Lockhouse would appear after the rehabilitation was complete. A firepit and picnic table area would be added downstream of the lockhouse, with a parking pad for guests behind the structure.*



*The first floor plan shows the ramp that would make the lockhouse handicap-accessible.*



*The second floor plan shows two bedrooms, with a sitting room in the center.*

# VOLUNTEERS SHOW THEIR CANAL PRIDE

When this issue hits mailboxes, we will be in the midst of hosting our annual Canal Pride Days, with over 300 volunteers helping us clean up the Park during four public events: Great Falls on April 23, Williamsport on April 30, and both Hancock and Lock 75 on May 7.

Now in its ninth season, Canal Pride Days is the Park's largest volunteer event, bringing together volunteers of all ages to assist with revitalization efforts in four areas of the Park.



We want to express our extreme appreciation to our Canal Pride sponsors: REI, Guest Services, Inc., Friends of Historic Great Falls Tavern, Minkoff Development Corporation, the National Environmental Education Foundation, Toyota, and the Wunder Family. Once again this year, we were thrilled to receive a \$10,000 grant from REI, a popular retailer of outdoor clothing and equipment. Its grant program, which encourages the active conservation of nature, the responsible use and enjoyment of the outdoors, and active participation in human-powered outdoor recreation, is a perfect fit with the C&O Canal Trust's goals.

For the second year in a row, the C&O Canal Trust held an artwork contest in support of Canal Pride. The winning artist was Blake Barron, and his winning design (above) is featured on this year's Canal Pride Days shirts, which are given to each volunteer.

We will also be hosting a variety of private groups for volunteer events this spring. Thanks to the following groups who have already volunteered: FedEx Ground, Marriott, and Adat Shalom. To schedule your own event, contact Director of Programs and Partnerships Becky Curtis at 301-745-8888.



Two volunteers clear invasive plants from a hillside in Great Falls during last year's Canal Pride event.

## MARSDEN TRACT BRIDGE TO BE REPLACED

### *Improvements also coming to Billy Goat and Capital Crescent Trails*

On November 14, 2015, the C&O Canal Trust broke ground for construction on the new Marsden Tract bridge over the canal. Park Superintendent Kevin Brandt, C&O Canal Trust Board Chair Michael C. Mitchell, and Trust President Robin Zanotti participated in the ceremony. The bridge is being funded by donors to the C&O Canal Trust's Towpath Forever program, with matching funding from the National Park Service Centennial Challenge Program. It is the first project to take place in the Park in honor of the National Park Service's 100th anniversary.

Preparations were completed over the winter, and the new bridge will be installed April 21-24, 2016, during four eight-hour work days. Arriving as a kit, the new bridge will be assembled on-site by a group of skilled volunteers. The current bridge has fallen into disrepair, with plywood covering multiple sections of the walking surface. During construction, access to the towpath from the MacArthur Blvd. entrance will remain open, as the old bridge will not be removed until the new bridge is completely installed. Eagle Scouts are completing a secondary project at the same site, rebuilding the steps leading from MacArthur Blvd. to the towpath.

Projects are also planned for the Capital Crescent Trail and the Billy Goat Trail. The Capital Crescent Trail is a heavily-used recreational trail and a major commuting route for bicyclists in the Washington, D.C. area. We will be funding the removal of foliage overgrowth along this trail. The Billy Goat Trail is one of the Park's most popular hiking trails and, according to the National Park Service, Section A of the trail is one of the most difficult and strenuous trails in the East. The heavy foot traffic on the trail has



Board Chairman Mike Mitchell, Park Superintendent Kevin Brandt, and President Robin Zanotti break ground on the new bridge at Marsden Tract, while donors to the project look on from the old bridge.

taken a toll on its natural surroundings. The North Trailhead, in particular, has suffered from the increased creation of social trails leading from the interior of the footpath to the exit at the C&O Canal Towpath. This regular trampling disturbance has impacted natural resources and encouraged erosion in the area. In response, we will be funding the construction of a boardwalk at the trailhead to discourage hikers from creating and using social trails.

# CANAL CLASSROOMS IMPACTS STUDENTS

Students living near the Park will have the opportunity to visit the C&O Canal with their classmates this spring as the Canal Classrooms program starts back up in April. Last year, approximately 8,000 pre-K to Grade 12 students from over 140 schools participated. The C&O Canal Trust is a major funder of Canal Classrooms, having raised \$65,000 in fiscal year 2015 to support the program.

This innovative program exposes students to a variety of lessons based in the STEAM curriculum (Science – Technology – Engineering – Arts – Math). One of the hallmarks of the Canal Classrooms program is that it pairs retired teachers with Park Rangers to deliver education programs as part of the Canal Classroom

Corps (CCC). This past year, the CCC grew to 50 teachers, who served over 2,000 hours. Teachers also worked with Park Rangers to modify old curriculum lessons and write entirely new lessons that adhere to the core curriculum.

One program aimed at high school students, called “Citizen Scientist,” has students participate in water quality testing. After observing three bodies of water — a stream, the river, and the canal — the students then record their data on an online platform that is used by scientists, educators, and other professionals in the field of water quality. Lessons for younger children include mapping activities, measuring tree growth, and supplying a canal boat for its voyage.

Both the Park and the Trust recognize that early interactions with students help to encourage a lifelong interest in education, recreation, and exploration of their environment. Hollie Lynch, the Park’s Education Coordinator, explains, “The immediate outcome of education programming is making a relevant connection to communities as students, teachers, and parents come to learn and explore their local national park. The long-term outcome is fostering the next generation of park stewards to care for these special places.”

We continue to raise money to support Canal Classrooms. Visit [www.CanalTrust.org](http://www.CanalTrust.org) to make a gift.

## NATIONAL PARK SERVICE CELEBRATES 100 YEARS

The National Park Service is celebrating a major milestone this year—its 100th anniversary. The C&O Canal National Historical Park and the C&O Canal Trust have scheduled a variety of events, programs, and projects to celebrate the Park Service’s Centennial year.

### PROJECTS

#### Conococheague Aqueduct

The C&O Canal National Historical Park recently received \$1.3 million from the National Park Service’s Centennial Fund to rehabilitate the Conococheague Aqueduct in Williamsport. That funding will be matched by \$7.57 million from the State of Maryland. When completed, the project will enable canal boats to once again travel across the aqueduct, an experience that is not available anywhere else in the United States.

#### Marsden Bridge and Trail Improvements

Our improvements to the Marsden Bridge, Capital Crescent, and Billy Goat Trails are being funded in part by matching funds from the National Park Service’s Centennial Fund. See page 4 for more details.

#### Swains Lockhouse Rehabilitation

The C&O Canal Trust’s rehab of Swains Lockhouse is our major Centennial project. Learn more on pages 1 and 3.

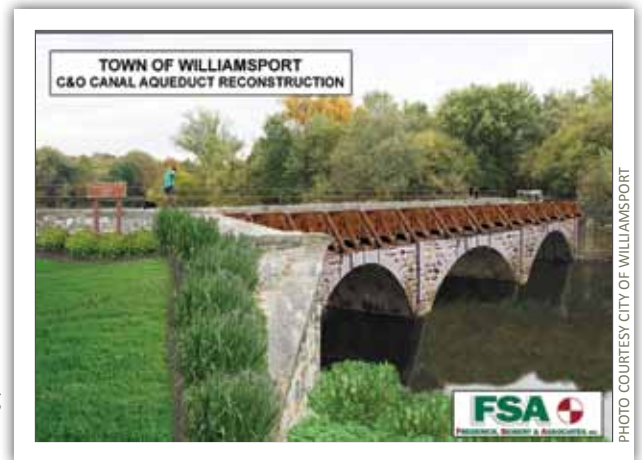
### EVENTS

The Park has already hosted events such as the First Day Hike and a Civil War-era dance for President’s Day. More programs are on tap for the summer months, including multiple celebrations in the Park on the actual 100th anniversary date, August 25. Check the Trust’s monthly email newsletter to learn when these events will be happening. (Sign up to receive our email newsletter on our homepage at [www.CanalTrust.org](http://www.CanalTrust.org)).

### BIRTHDAY CARD

When you are near Great Falls Tavern, stop in to sign the Park’s two anniversary cards — one for the 100th anniversary of the National Park Service, and the other for the 45th anniversary of the C&O Canal National Historical Park. That’s right! Our Park is also celebrating a significant milestone this year.

(Right) A birthday card celebrating both the Centennial of the National Park Service and the 45th anniversary of C&O Canal National Historical Park is displayed at the Great Falls Visitors Center. Visitors are invited to stop in and sign their best wishes.



A rendering shows how the Conococheague Aqueduct would look after construction is complete.

PHOTO COURTESY CITY OF WILLIAMSPORT



PHOTO BY RUSS KENNEDY

# TRUST AND FRIENDS OF FLETCHERS COVE TEAM

The C&O Canal Trust has signed an agreement with the Friends of Fletchers Cove, becoming that group's fiscal agent. As part of this arrangement, the C&O Canal Trust will hold in account the money the Friends of Fletchers Cove raises to support improvements at Fletchers Cove.

The Friends of Fletchers Cove is a group of concerned citizens who organized in order to address the siltation problem at the cove, which has been filling in with sediment for years and is making access to the Potomac River more difficult. Friends of Fletchers Cove is committed to maintaining, improving, and sustaining the public benefits offered in the area. They are currently raising \$150,000 to

fund a core and bore soil sample study that will help the National Park Service determine options for remediation.

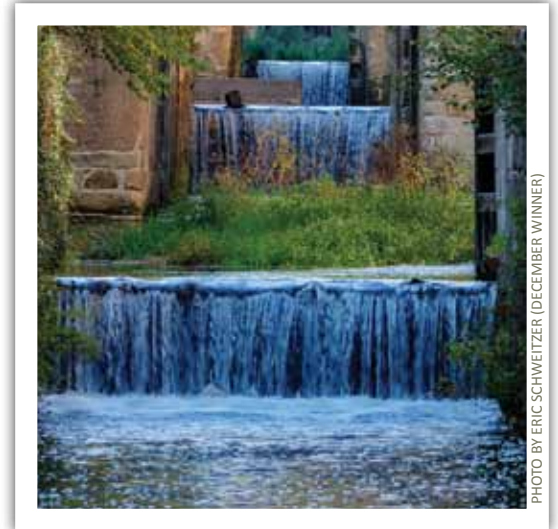
A popular spot known for its spring shad run, the area also hosts the Boathouse at Fletchers Cove, which sells fishing licenses, refreshments, bait and tackle, and rents rowboats, kayaks and canoes.

Friends of Fletchers Cove Executive Committee member Mike Bailey stated: "As a unique, natural access point onto the Potomac River in Washington, D.C., Fletchers Cove is rich with history and offers traditional outdoor family-oriented activities, including watersports and fishing. We are grateful and

honored to partner with the C&O Canal Trust to begin the task of remediation that will serve to maintain access and save the Cove."

The C&O Canal Trust will serve as the group's fiscal agent, allowing it to raise money as a nonprofit. The Trust's relationship with the Park will ensure the money is spent in accordance with Park Service regulations. Trust President Robin Zanotti said, "This partnership is exciting, because it allows us to partner with another group that has the same values the Trust does – to preserve the park and maintain it for future generations." More information about the Friends of Fletchers Cove is available on our website: [www.CanalTrust.org/fletchers](http://www.CanalTrust.org/fletchers).

## PHOTO CONTEST WINNERS CAPTURE PARK



Congratulations to our new group of photo contest winners! Visit our Facebook page ([www.facebook.com/CanalFriends](https://www.facebook.com/CanalFriends)) to vote each month, and visit [www.CanalTrust.org/photo-contest](http://www.CanalTrust.org/photo-contest) for entry rules.

# TRUST WELCOMES PATRICIA BARBER

We are pleased to welcome Patricia Barber as our new Director of Development. She comes to the Trust from the University of the Witwatersrand, a globally-ranked university located in Johannesburg, South Africa, where she was their U.S. Development Officer. In that capacity, she launched a national fundraising program to expand support from U.S.-based alumni, foundations, and corporations. Prior to her position at the university, Barber was a communications consultant with The Whitaker Group, a consultancy specializing in trade, investment, and business in Africa.

“Patricia brings to her new position a passion for the Park and the work of the Trust,” said Trust President Robin Zanotti. “Her exceptional communication skills and diverse fundraising background will be tremendous assets as she leads the growth of our development program.”

Barber commented, “The C&O Canal National Historical Park is a national treasure which brings together an extraordinary range of people, including inside-the-Beltway dwellers, suburbanites, farmers and rural folk from far western Maryland, and visitors of every age, nationality, and background from farther afield. For more than 35 years, I have been one of those privileged to live and play along the canal, and I am thrilled to be given this opportunity to work with the dedicated board and staff of the C&O Canal Trust to ensure that the programs and resources supported by the Trust thrive and grow into the future.”

Barber is a longtime resident of Washington County. She enjoys visiting the Park and taking advantage of the many activities that the canal offers, including hiking, biking, kayaking, canoeing, and cross-country skiing.

## JOIN THE TRUST ONLINE

**Plan Your Visit:** [www.CanalTrust.org/Plan](http://www.CanalTrust.org/Plan)

You can explore all 184.5 miles of the C&O Canal with our new website feature, which catalogues over 600 points of interest in the Park and in the surrounding Canal Towns.

**Save Swains Lockhouse:** [www.CanalTrust.org/Swains](http://www.CanalTrust.org/Swains)

We are blogging about our Swains Lockhouse rehabilitation at this address—check back every Monday to see what we are up to!

**Canal Discoveries:** [www.CanalTrust.org/Discoveries](http://www.CanalTrust.org/Discoveries)

Our C&O Canal Park Rangers contributed stories about 40 hidden gems throughout the Park, and we collected them here. Take your mobile device into the Park and explore with our “virtual” rangers.

**Canal Quarters:** [www.CanalQuarters.org](http://www.CanalQuarters.org)

See photos of our six historic lockhouses and book your overnight stay here.

**Email Newsletter:** [www.CanalTrust.org](http://www.CanalTrust.org)

Do you receive our monthly email newsletter? Sign up on the bottom of our homepage (in the blue bar).

**Facebook:** [www.facebook.com/CanalFriends](http://www.facebook.com/CanalFriends)

Get all of our Facebook updates and always know what is happening in the Park.

**Twitter:** [@CanalTrust](https://twitter.com/CanalTrust)

See the latest Tweets on Park and Trust happenings.



Two friends of the C&O Canal Trust are canoeing the canal while exploring the towpath. Joe Hage and Mary Kearney (pictured) are documenting their entire journey on their blog [canalbycanoe.com](http://canalbycanoe.com). Safe travels, Joe and Mary!

## CANAL WATER LEVELS VARY BY LOCATION

Have you ever wondered why parts of the canal have water while other sections remain dry? Currently, 20-25 miles of the canal are watered, providing recreational and scenic opportunities to Park visitors.

Two of the original eight water inlets from the Potomac River are still in use today: Inlet 1 near Lock 5 and Inlet 2 at Lock 23. At Inlet 1, water is brought in from the Potomac, which provides water flow through Georgetown. In winter, the canal’s water level is lowered to alleviate ice damage to canal locks, aqueducts, and waste weirs. This also creates a safer area for ice skating and ice hockey.

River water brought in at Inlet 2 provides water from Level 22 to the Great Falls

Tavern and is used for the replica canal boat rides. This water continues downstream to Wide Water. During the summer months, very little water makes it to Lock 22 (Pennyfield) even though the upstream section of Level 22 is filled to the brim. Hydrilla, an invasive plant, grows on top of alluvial fans created by floods and streams. Water flowing through this thick growth of hydrilla is slowed and only a small amount makes it to downstream areas. Once the hydrilla dies off in late summer/early fall, the water level again becomes deep enough for boat rides to resume.

Below Wide Water, this same situation prevents the water from reaching the Seven Locks area in quantities large enough to keep this section of the canal watered. Currently,

due to leaks in the canal at Log Wall (located at mile 11), water is being kept low at Wide Water to prevent additional leaks until repairs can be made.

At Cushwa Basin (mile 99.4) in Williamsport, the canal is fed by street runoff and natural springs. Continuing upstream, the canal is watered at Big Pool and Little Pool by streams, and at Hancock, where water is pumped into the canal from the Little Tonoloway Creek. From Town Creek Aqueduct to Oldtown (miles 162.3-166.7), the canal is watered by natural sources. In Cumberland, at the western end of the Park, the canal is filled from the Potomac to provide recreational opportunities and to create a beautiful area for visitors.



**C&O CANAL TRUST**  
 1850 DUAL HIGHWAY, SUITE 100  
 HAGERSTOWN, MD 21740



## SUPPORT THE TRUST

Make a gift that will help protect, restore, and promote the extraordinary resources of the C&O Canal National Historical Park by visiting [www.CanalTrust.org](http://www.CanalTrust.org) today!

## Buy your C&O Magnets & Stickers!

Let your car, kayak, fridge, or wall proclaim your love for the C&O Canal! Our C&O magnets and stickers are available in twelve different designs:

- C&O (shown on car)
- Biker (shown)
- 184.5 (shown)
- Dog walker
- Horseback rider
- Kayaker
- Male walker
- Male runner
- Female walker
- Female runner
- Paddler
- Fisherman

[CanalTrust.org/Shop](http://CanalTrust.org/Shop)



The C&O Canal Trust is a 501(c)(3) organization, donations to which are tax-deductible to the fullest extent of the law. A copy of the current financial statement of the C&O Canal Trust is available by writing 1850 Dual Highway, Suite 100, Hagerstown, MD 21740 or by calling 301-714-2233. Maryland Residents: Documents and information submitted under the Maryland Charitable Solicitations Act are also available, for the cost of postage and copies, from the Maryland Secretary of State, State House, Annapolis, Maryland 21401. Virginia Residents: A financial statement is available from the State Office of Consumer Affairs in the Department of Agriculture and Consumer Services, P.O. Box 1163, Richmond, VA, 23218.



THE CANAL QUARTERLY IS PRINTED ON 50% POST-CONSUMER RECYCLED PAPER