



THE CANAL QUARTERLY

WWW.CANALTRUST.ORG

SWAINS TO JOIN CANAL QUARTERS PROGRAM

Lockhouse 21 in Potomac, locally known as “Swains Lockhouse” after the family who inhabited it for years, will be the seventh lockhouse rehabilitated as part of the award-winning Canal Quarters program.

Canal Quarters is a partnership between the C&O Canal Trust and the C&O Canal National Historical Park, and has so far provided for the rehabilitation of six historic lockhouses located along the C&O Canal. Swains Lockhouse will be the first rehabilitation undertaken since 2011.

Swains Lockhouse is larger than most other lockhouses due to a 1890s expansion, and the extra room will allow for multiple uses. The original part of the building, built in 1832, will house the Canal Quarters program, with accommodations for up to eight guests. The 1890s part of the building will become a designated space for the Park’s Canal Classrooms program. Students on educational trips to the Park will be able to participate in learning activities in this space, steps away from the canal. Plans for an artist-in-residence during the off-season have also been discussed.



PHOTO BY C&O CANAL TRUST

The lockhouse is in dire need of structural and architectural repairs. The Trust is partnering with the Friends of the Historic Great Falls Tavern and the C&O Canal

Association to raise \$100,000 for the rehabilitation. The C&O Canal Trust has committed to raising \$75,000 of that amount.

Each lockhouse currently in the Canal Quarters program was rehabilitated and furnished to depict a specific time period between 1830-1954. Each tells a story of a period of Canal history, and visitors are able to spend

up to three nights in the Quarters for a nominal fee. The historical theme for Swains lockhouse has not yet been decided.

“We are very pleased to be embarking on this rehabilitation project with the C&O Canal National Historical Park,” stated Chairman of the Board Michael C. Mitchell, “that will further both the Canal Classrooms and Canal Quarters programs. These two programs are so important to our mission. The Swains project will allow us to establish a central base in the Park for Canal Classrooms programming, as well as enlarge our award-winning Canal Quarters program.”

Swains Lockhouse is well-known in the Potomac area due to the generations of Swains who lived there during the twentieth century. They operated Lock 21 until the Canal closed to boat navigation in 1924. After the Park Service took over the property, the family ran a refreshment stand and boat rental from the lockhouse, until it closed in 2006.

continued on page 4



PHOTOS BY BARBARA BROWN

Photos of the downstairs (left) and upstairs (right) of Swains Lockhouse show the historic fabric that was uncovered during demolition. The exterior of the lockhouse is shown above.

BOARD OF DIRECTORS

CHAIR Michael C. Mitchell
VICE CHAIR Stephen E. Chaudet
TREASURER Linda Collyer
SECRETARY Kathy Poole
Sandra Adams
William Randall Cone
Sherif Etefa
John S. Guttman
Donald Harrison
Edward J. Kessler
Tim Rowland
Dan Spedden
Sandy Vogelgesang
Judy Welles

ADVISORY BOARD

Linda McKenna Boxx
Barb Buehl
William "Bud" Cline
Dennis Hudson
Leigh Kessler
Joseph M. Lawler
Robert Anton Mertz
Wilke Nelson
Donna Newcomer
Penny Pittman
Paula Reed
Kurt Redenbo
Thomas B. Riford
Anthony Stacy

STAFF

PRESIDENT
Robin Zanotti, ACFRE
INTERIM VICE PRESIDENT OF
DEVELOPMENT
Julie Siler
DIRECTOR OF PROGRAMS &
PARTNERSHIPS
Becky Curtis
DIRECTOR OF COMMUNICATIONS
Heidi Glatfelter Schlag
OFFICE ADMINISTRATOR
Jane Neff
COMMUNICATIONS/DEVELOPMENT
ASSOCIATE
Melanie Draper

A NOTE FROM THE PRESIDENT

What a wonderful six months it's been since I began as president of the C&O Canal Trust! I've been able to enjoy spring, summer, and now fall in the Park. I've been up and down the Canal, exploring parts of the Park that are new to me, and meeting the individuals lucky enough to have the Park as part of their communities. It's been particularly rewarding to meet those individuals who support the Trust, either financially, as volunteers, or both.

This is the time of year we take the opportunity to let our donors know how very grateful we are for their partnership. Donors supported us to the tune of \$430,000 during our fiscal year that ended on September 30, 2015. Thank you, thank you, thank you! We could not protect and preserve our beloved C&O Canal National Historical Park without your generosity!

In the following pages, you will read about the many ways the Trust supports the Park. We provide financial support each year to Canal Classrooms, the Park's innovative education program, and we work hand-in-hand with Park Superintendent Kevin Brandt to help fundraise around the Park's priorities.

We also run programs ourselves that benefit the Park in a myriad of ways. Our award-winning Canal Quarters program is entering its seventh year of welcoming guests, and we are thrilled to be adding our seventh lockhouse with our planned rehabilitation of Swains Lockhouse 21. We are participating in the strategic planning the Canal Towns Partnership is undertaking, and we are in the process of identifying areas needing volunteer help for our Canal Pride events this spring. Our new Plan Your Visit website section will highlight our Canal Discoveries, as well as helping visitors explore the Park in new ways. Each of these Trust programs is only possible thanks to the generosity of our donors.

You will see the list of our Trust donors in this issue. If you're on the list, we are so appreciative of your support! If you're not, please consider joining this small army of folks dedicated to keeping our national treasure the wonderful resource we can all enjoy today, and for years to come.



Robin Zanotti, Trust President

I SUPPORT THE C&O CANAL!

Giving Levels:

Canawler (up to \$250), Lockkeeper (\$250-\$499), Boat Captain (\$500-\$999)
William O. Douglas Society – Canal Preserver (\$1,000-\$2,499), Canal Traveler
(\$2,500-\$4,999), Canal Explorer (\$5,000-\$9,999), Canal Visionary (\$10,000+)

___ \$50 ___ \$100 ___ \$184.50 ___ \$500 ___ \$1,000 ___ Other ___

*Please make your check payable to the C&O Canal Trust.**

Name: _____

Address: _____

E-mail: _____

FOR CREDIT CARD DONATIONS ONLY:

Please charge my: ___ VISA ___ MasterCard ___ Discover
___ American Express

Credit Card #: _____ Exp. Date: _____

Signature: _____

Telephone #: _____

The C&O Canal Trust is a 501(c)(3) non-profit organization. Donations to the Trust are tax-deductible to the fullest extent of the law.

Phone: 301-714-2233

* MAIL TO: C&O Canal Trust, 1850 Dual Highway, Suite 100, Hagerstown, MD 21740

ONLINE: *Make a secure donation online at www.CanalTrust.org*

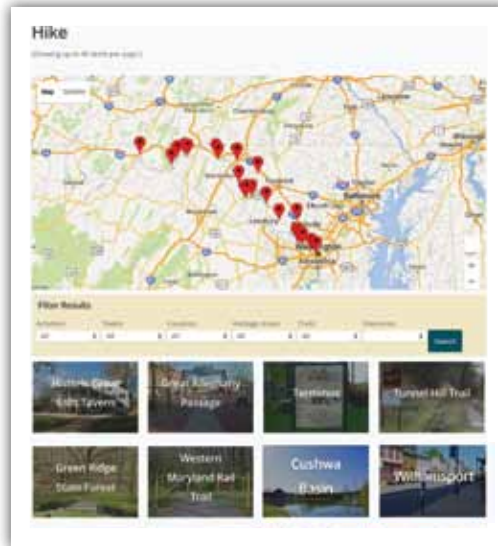
NEW ON THE WEBSITE: PLAN YOUR VISIT TO THE CANAL

This month, the C&O Canal Trust launched a new “Plan Your Visit” section of our website at www.canaltrust.org/plan. Supported by a grant from the Maryland Heritage Areas Authority, the Plan Your Visit section features over 600 points of interest that have been keyworded and geotagged so they are searchable by interest and location.

Visitors will now be able to search for points of interest in the C&O Canal National Historical Park based on a variety of search topics, including activity (hiking, paddling, history, etc.), Canal Town, county, Heritage Area, trail, and itinerary.

“We are so pleased to be able to offer this system to the visitors to the C&O Canal,” said Director of Communications Heidi Glatfelter Schlag. “It is something that has been missing from our web presence. Now, visitors will be able to explore the Park in a whole new way, with a variety of points of interest that folks may have never noticed before pinpointed on the map.”

A corps of volunteers worked to bring the project to life, including 59 photographers who took beautiful photos up and down the canal, and the Potomac Appalachian Trail Club GPS Rangers, who visited each Point of Interest to collect the GPS information that makes it available on the map.



A screenshot of the new Plan Your Visit web section shows search results on a map with photos for the keyword “hike”.

“The beauty of the website is that it is built to grow,” Schlag said. “I’m sure we have missed some points of interest, and we can add them as we become aware of them. We hope that, as visitors use the site, they can help us refine our information and make it even more useful.”

Over the next six months, the website will be converted into a mobile app, so people can download the entire database and access it on the towpath, even in remote spots where internet access is spotty.

CORPORATE GROUPS EXHIBIT THEIR CANAL PRIDE

The C&O Canal Trust would like to thank and recognize eleven local corporate groups for exhibiting their Canal Pride through their efforts of stewardship along the canal. During the 2015-2016 fiscal year, the

following local corporate groups partnered with the C&O Canal Trust to benefit and improve their local communities: Bank of America, Smith Elliott Kearns & Company, LLC, JLG Industries, REI,

Accenture, Cauhaus Design, AECOM, FedEx Ground, WeddingWire, Marriott International, and Zurich Insurance.

Each year, the C&O Canal Trust works with a variety of corporate groups looking for ways to give back to their communities. FedEx Ground Administrator Sandra Waggoner stated, “FedEx Ground prides itself on community outreach, and every year around Earth Day, our Sustainability Team chooses to donate some of our time to the C&O Canal.” Waggoner described their service day as a “joyful event” that allows their employees to escape their desks for “a day of activity among the trees.” Employees feel the satisfaction of being a part of a cause while strengthening their bonds with colleagues.

CANAL PRIDE LOGO CONTEST

The C&O Canal Trust will again conduct a t-shirt artwork contest for our 2016 Canal Pride events. Amateur artists are invited to submit artwork for consideration. The winning design will be printed on our Canal Pride t-shirts and worn by volunteers as they work in the C&O Canal National Historical Park during the spring months.

Canal Pride events are volunteer project days that tackle the backlog of maintenance in the Park. Volunteer projects include painting picnic tables, clearing trash, and removing invasive plant species.

Submitted artwork should represent some aspect of the C&O Canal and the Canal Pride concept. Each design must include the words “C&O Canal Pride Days” and the year “2016.”

The winner will receive a C&O Canal Trust prize pack and their artwork will be printed on our 2016 Canal Pride t-shirts!



Pictured here is our 2015 winning logo, designed by Angie Ebersole.

Please see www.canaltrust.org/ArtworkContest for more details and how to enter.



Over 100 members of Marriott International’s Digital Team spent their Canal Pride Day restoring the picnic and recreation area of Carderock.

CANAL PRIDE 2016: Dates for the public Canal Pride Days will be announced in March. You can book your corporate event now by contacting Director of Programs and Partnerships Becky Curtis at curtis@canaltrust.org or 301-745-8888.

CANAL CLASSROOMS CONTINUES TO FLOURISH

Now in the fourth year of its five year strategic plan, Canal Classrooms is the C&O Canal National Historical Park's education program, which is providing multiple opportunities for students to learn in a unique outdoor classroom. The C&O Canal Trust is committed to raising \$65,000 to support this program this year.

One of the Park's goals for Canal Classrooms is to create future stewards for the C&O Canal. The hope is the students will return to the Park with their families, providing the impetus for stewardship for years to come.

Programming is held at Williamsport, Cumberland, and Great Falls, where thousands of students from Maryland,

Most Canal Classrooms students participate in a full day of STEM (Science, Technology, Engineering, and Math) curriculum-based education provided by Park Rangers and the Canal Classrooms Corps, a group of retired teachers and professionals recruited and trained to deliver education programs to school audiences.

During the 2014-2015 school year, Great Falls piloted a new suite of elementary and secondary programs and created an "Education Materials Space" for use by the Canal Classrooms Corps.



Students record their findings during their Canal Classrooms experience in the C&O Canal National Historical Park.

"I really enjoyed going on the nature walk and seeing the great falls. The great falls was so pretty, awesome, and cool. I look forward to going back on the nature walk and show my family the great falls. Thank you for letting our class do all the things we did." - madison

Washington, D.C., Virginia, and West Virginia are served. Over 8,000 Pre-K to Grade 12 students from over 140 schools were involved in the program during the 2014-2015 school year, and over 25,000 students have experienced Canal Classrooms education since its inception.

In Washington County, a Citizen Scientist program was piloted at all high schools. This program exposes students to water quality testing and environmental education, and allows

them to record their data on an online platform.

This year, Canal Classrooms was the recipient of funding through the National Park Service's Centennial Challenge Grant, created to celebrate the 100th anniversary

of the National Park Service. The program was awarded a \$75,000 Centennial Challenge Grant, and that amount was matched by the C&O Canal Trust, the Friends of Historic

"Thank you for helping us know about the past. I had a lot of fun. Now my family knows more about the Paw Paw tunnel." - David

Great Falls Tavern, and Freedom's Run. Part of these funds will help redesign exhibits and rooms at Great Falls Tavern to be used for education and interpretive programming.

CLIMBING TO NEW HEIGHTS

On Thursday, June 4, 2015, Secretary of the Interior Sally Jewell joined rock climber extraordinaire Tommy Caldwell at Carderock to help rising fourth grade students from Washington, D.C.'s Elsie Whitlow Stokes Charter School scale the heights.

Secretary Jewell is no stranger to climbing —she's climbed Mount Rainier and Vinson Massif, the highest mountain in Antarctica. Tommy Caldwell is America's premier rock

climber and recently completed the first-ever free climb of the Dawn Wall of El Capitan at Yosemite National Park. Their combined experience was the perfect fit to lead the charge up Carderock in support of President Obama's Every Kid in a Park initiative, which offers free access to fourth graders and their families at national parks and public lands.

REI's Mid-Atlantic Outdoor School provided instructors and equipment for the climb, making sure the climb was a fun, safe adventure for Secretary Jewell, Tommy Caldwell, and all the kids.

After receiving instruction and climbing gear, students received encouragement and assistance from Secretary Jewell, Tommy Caldwell, and REI's instructors as they made their ascent. A hike on part of the Billy Goat Trail was also included in the morning's activities.



Students pose with rock climber Tommy Caldwell (far left) and Secretary of the Interior Sally Jewell (beside Tommy).

Swains Lockhouse

(continued from page 1)

The Swains Lockhouse will feature electricity and running water when it opens as a Canal Quarters lockhouse. It will join the six already in the program, which have hosted over 10,000 guests from 37 states during over 3,000 stays.

Construction will proceed as funds become available. A blog will be hosted on the C&O Canal Trust's website at www.canaltrust.org beginning this winter to document the rehabilitation of the lockhouse.

If you would like to make a financial gift to support the rehabilitation of Swains Lockhouse, please contact Robin Zanotti at 301-745-8889 or zanotti@canaltrust.org. You can also make a gift at www.canaltrust.org.

SUPPORT THE C&O CANAL TRUST ON #GIVINGTUESDAY™

Giving Tuesday, this year scheduled for December 1, has become a day for stepping away from your busy holiday shopping to give to causes that have had an impact on your life all year long. If you love the C&O Canal, we hope you will make a gift to the C&O Canal Trust on December 1 to help us further our mission of preserving and protecting our beloved canal.

We welcome gifts of all amounts, but this year, we have a special offer for donors making higher-level gifts. We have created a new 2016 C&O Canal Trust wall calendar, which features twelve spectacular photos of the C&O Canal National Historical Park taken for our photo contest. There are two ways to get a copy of the calendar:

1. Become a Canal Keeper with a regular monthly gift of at least \$15 a month to the C&O Canal Trust, and we will thank you with a copy of our new 2016 C&O Canal Trust calendar!

Your monthly gift will provide a reliable stream of support that is essential to sustaining the projects and programs that preserve, protect, and promote the C&O Canal. Canal Keepers will also receive special recognition in our annual Honor Roll of Donors for their contributions.

2. Make a gift of \$184.50 or more anytime between November 24 and December 4 to receive a calendar as our thank you! There are 184.5 miles on the canal, so we think \$184.50 is the perfect amount -- one dollar for each mile!

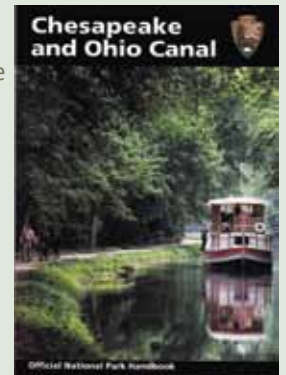
You can make your gifts at www.canaltrust.org/GIVE. Whatever amount you choose to give, we thank you for your continued support of the C&O Canal Trust!



HANDBOOK REPRINTED

The C&O Canal National Historical Park recently republished their official handbook, thanks to the efforts of Steve Dean. Steve volunteered 1,000 hours to update this resource, as well as create an additional twenty pages for the publication. In addition, he garnered support from the C&O Canal Association, a partner of the Park, to pay for publication. Association members Karen Gray and Dward Moore also assisted, and without their efforts, the Park's most popular book would still be out of print.

You can buy the book in the Park's Visitors Center for \$10.95. Proceeds benefit the Park's education programs.



LOVE AT THE LOCKHOUSES

Lockhouse 10 transports visitors back to the 1930s; the era of the New Deal when the Civilian Conservation Corps performed restoration work on the canal. In recent years, Lockhouse 10 has seen the arrival of several visitors who fell in love with the lockhouse and with each other — leading to marriage proposals and even a wedding!

Katie Kelly and Suji Brown took a camping trip three years ago to celebrate Suji's birthday and stayed at Lockhouse 49. Both loved the experience and have since enjoyed multiple stays at Lockhouse 6 and 10. "It's a marvelous experience," says Suji.

On June 26, 2015 (the same day as the U.S. Supreme Court ruled that the U.S. Constitution guarantees the right for same-sex couples to marry in all 50 states), they were married on the bridge at Lockhouse 10 in a small, intimate ceremony. According to Suji, Lockhouse 10 is a great place to sit on the porch with your coffee in the morning and watch the people go by on the towpath. Listening to the evening sounds of the forest, as well as daytime biking and just hanging out, make it a very special place.

Marcia Carlson and Mark Sauer had their first date at Lockhouse 10 on June 2, 2013. Marcia is a Quartermaster at the lockhouse and was in the midst of her duties when Mark arrived. He jumped right in and helped clean before enjoying a picnic lunch. Mark's help swept Marcia off her feet, leading to a second date. Since then, Mark has assisted with Quartermaster duties and participated in annual work parties at the lockhouse. This past May, Mark and Marcia were in the middle of their Quartermaster duties—she was doing inventory while he mowed and trimmed the yard. This time, when they sat down at the same picnic table from their first date, Mark proposed! They married on August 22, 2015.

We have heard other stories of romance at our Canal Quarters lockhouses, but Lockhouse 10 seems to be particularly inspiring to many. According to Becky Curtis, Director of Programs and Partnerships at the Trust, the first-ever guests to stay at Lockhouse 10 were married at Carderock and spent their wedding night there. Maybe that's all it took to create a loving and romantic tone for future guests!



Suji Brown Kelly and Katie Kelly at their June 26 wedding at Lockhouse 10.



Mark Sauer and Marcia Carlson near Lock 10.

2014-2015 HONOR ROLL OF DONORS

The Board of Directors and the staff of the C&O Canal Trust wish to thank all of our donors who have generously supported our work during the last fiscal year.

The following Honor Roll of Donors reflects giving between October 1, 2014 and September 30, 2015. Every attempt has been made to ensure this list is complete.

If we have excluded you in error, please contact Julie Siler, Interim Vice President of Development at siler@canaltrust.org or 301-714-2233.

CANAL VISIONARIES

\$10,000 and up

Carlson Family Foundation
Elliotsville Plantation, Inc.
MARPAT Foundation, Inc.
The J. Willard & Alice S. Marriott Foundation
Richard E. & Nancy P. Marriott Foundation
Montgomery County Council
Recreational Equipment, Inc.

CANAL EXPLORERS

\$5,000 - \$9,999

Bernstein Family Foundation
Mars Foundation
Michael and Sue Mitchell*
Mitchell Family Foundation
Morningstar Foundation
National Park Foundation
Prince Charitable Trusts
John Rentzepis*
Nora Roberts Family Foundation

CANAL TRAVELERS

\$2,500-\$4,999

Arimo Associates, Inc.
Calleva
John Guttman and Holly Cannon*
Steve and June Chaudet*
Paul and Gail Chod*
Thomas D. and Kathleen L. Fingleton*
Friends of the Historic Great Falls Tavern
A.R. Landsman Foundation
Macy's/Bloomingtondale's
Minkoff Development Corporation
Bruce and Kathleen Poole*
Quality Systems and Products, LLC
Marcia Rounsaville*
Mark Stover*
Washington County Board of Commissioners

CANAL PRESERVERS

\$1,000 - \$2,499

Tom Roberts and Sandra Adams*
The E. Bryce & Harriet Alpern Foundation
Booz Allen Hamilton Donations
Peter Bross*
Cabin John Citizens Association
Ashby and Katie Chamberlin*
Bud and Dell Cline*
Stan and Linda Collyer*
Community Foundation of Frederick County
The Community Foundation for the National Capital Region
William Randall and Lisa Cone*
Audrey R. Copeland*
Cumberland Valley Athletic Club
David and Page Dekker*
Elizabeth Barratt-Brown and Bos Dewey*
Sherif Ettefa and Nermin Elhaddad*
Eric Froehlich
The Guide Foundation
Corbin and Pamela Gwaltney*
Donald and Elizabeth Harrison*
Megan Elizabeth Kula and Curran Johnson*

KPMG, LLP

Edward and Arleen Kessler*
Knight and Ann Kiplinger*
The Kiplinger Foundation
Peter and Sydney McKelvy*
James Menzies*
Robert and Pamela Mertz*
Jim Burks and Bette Jane Pappas*
Brett and Kirsten Quigley*
Tim and Beth Rowland*
Roy and Ase Sewall*
Judith Welles and Tim Shank*
Dennis S. Shiflet
Joanna Sturm*
Mary Jo Veverka*
The Veverka Family Foundation
Rick and Sally Warner Watts*
Richard B. Werner and
Debbie Cross Werner*
Karen Beth Possner and Stan Wiggins*
Anthony Wilder Design/Build, Inc.
Sandy Vogelgesang and Geoffrey Wolfe*
Robin and Mike Zanotti*

** Individual donors who have given a gift of \$1,000 or higher are members of the William O. Douglas Society, our leadership giving society for the C&O Canal Trust.*

BOAT CAPTAIN

\$500 to \$999

William H. and Renee Agnew
Lucy Alexander
David T. and Sue S. Beddow
Frank and Joanne Crantz
Robert and Ann Pelham Cullen
Becky Curtis
David and Janet Curtis
Andrew L. Sandler and
Karen Lee Degerberg
Tabitha Eagle
Randy and Carol Fiertz
Linda Fisher
Steve and Joann Gardner
Jon Pike, DDS and
Diana Gaviria, MD
Carrie Halpert
James and Karen Harrison
William Justice
Catherine Luke
Jane MacLeish
Montgomery County Road Runners Club, Inc.

PHOTO CONTEST WINNERS

The beautiful photographs included among our Honor Roll of Donors are winning photographs from our monthly Photo Contest. Visit

<http://www.canaltrust.org/photocontest> for more details.



PHOTO BY DAVE RUSSELL, CHASING BLUE SKIES PHOTOGRAPHY (SEPTEMBER WINNER)

Michael and Kathleen Moran
John Muller
Mark Alan Rosen
Harold and Victoria Sakayan
Michael Mann and Carol Salzman
Jamie and Lisa Sterling
Herb and Jane Stevens
Bradley and Jody T. Thayer
Carol Thompson
Steuart and Linda Thomsen
Vanguard Charitable
Thomas and Francoise Vonier
Richard and Anne Wallace
Keith Williams

LOCKKEEPER \$250 to \$499

Richard and Teresa Abrams
Carole Lewis Anderson
Constance C. Arvis
James Bailey
Ray and Jennifer Baldwin
Stan and Shelley Balis
Neil and Joan Barkin
Michael and Phyllis Bayer
Donald and Catherine Bellenger
Bernstein Management Corporation
Peter Berty
Andrew and Kaye Boesel
David and Eileen M. Brooks
William Byron
Richard Chang
Charles Collins
Jack and Rita Colwell
Marlene J. Severson and David Cooley
James Corrado
David Crow
Michaela Daniel
Sally Davidson
Diane DeTroye
Margaret (Peggy) Dennis
Vincent G. and Jan Desiderio, Jr.
Richard and Penelope Doolittle
John Lodge and Mary Jane Euler
David and William R. Failor
David and Lucy Fitch
Helen French
Marie Gallup
Warren E. and Susan Goodell
Karen Mary Gray
Victoria Gray
Kettner and Dana Griswold
Peter Havenstein
Wayne and Beverly Johnson
Chas and Emily King
Jack and Julie Koczela
Michael and Lynn Koenig
John Eric and Louise Kwasniewski
Joe Lawler
Jay and Jane Lewis
Steven Magel
C. Peter Magrath
Harry and Deb Malone
Philip T. Evans and Colleen M. McEnroe

Gary and Karen McGinnis
Robert Williamson and Caryl McNeilly
Jerry Kickenson and Kathleen Michels
Joel and Julia H. Miller
Kevin and Laura Miller
Charles and Margaret Mills
Gregory S. and Lynn Mitchell
Jonathan and Bradley Moore
Jim Nelson
Wesley and Ann Nichols
Raymond Wiacek and Nancy O'Connell
George L. Ohrstrom, II
Jonathan and Karen Peck
Julia Perlman
Thomas Kimbis and Jill Prater
Greg Simon and Margo Reid
Chuck and Linda Rieger
Robert A. Robbins and
Marjorie Cohen Robbins
Mike Samuelson
James and Madeleine Schaller
James and Denise Schleckser
Steven Schmidt
Schwab Charitable
Will and Erica Shafroth
Peter Neal and Carolyn Smith
David C. and Carolyn C. Stump
Don and Karen Thibeau
Tain and Grace Tompkins
Barbara Boyle Torrey
Daniel Ward
Edward and Sheila Weidenfeld
David Wheeler
Gail Williams
Michael and Mary Young
Zurich American Insurance Company
Doug Zveare

CANAL CANAWLER Up to \$249

Ronald Abeles
Naomi Akai

Jim Engengrieder and Diane Allemang
Darci Allen
Gary and Barbara Allen
William G. Allman
Alice Alpert
Amazon Smile
Mark J. Andrews
Anonymous
Christopher Anthony
David B. Atkinson
Mary Austin
Lucinda Bach
Thomas H. and Barbara P. Bailey
Laura Baker
Vincent Chiappinelli and Suzanne Bakshian
Andrea Balbo
Philip Baldyga
Joanne and Edward E. Balkovich
Livia and David Bardin
Andrea Baridon
James A. Barker, Jr.
Richard and Carol Barron
J. Mel Bass
Hugh and Molly Baumgardner
Lindsey Beall
Anne Beckley
Beans in the Belfry
Arthur and Sandra Becker
Charles Behrend
Darr Beiser
Michael and Barbara Bell
Bruce and Susan Bender
Robert and Jody Benjamin
Gene Arnold Berger
Philip and Toby Berman
Andy and Valerie Bernat
Robert L. Bertera
Anne C. Beyersdorfer
James Biasco
Norman W. and Carol A. Birzer
Stephanie Blake
Blechman-Morenoff Foundation

Park After Dark: A Success!

The C&O Canal Trust's Fifth Annual Park After Dark fundraiser was a sold-out success and received rounds of compliments from those who joined us at the Historic Great Falls Tavern Saturday, September 19. We welcomed over 300 people to the outdoor event, which raised over \$95,000 in support of the Trust and the Canal Classrooms program. We thank everyone for their support!



Roy Sewall (left) was awarded the William O. Douglas Stewardship Award and Robert Mertz (right) was awarded the First Canal Pride Volunteer Service Award at Park After Dark. Both awards were presented by Park Superintendent Kevin Brandt and Trust Board Chairman Michael C. Mitchell.

David Bloom
 Elizabeth Boison
 Brad Northrup and Jody Bolz
 Janine Borofka
 Stephen Boyce
 Garland Bradfield
 Charles and Christine Bragale
 Janice Brissette
 Joseph and Susan Brookreson
 Frederick and Janet Brown
 Suji Brown
 Robert Bruce
 Michael and Betsy Brunner
 Michael and Judith Bucci
 John Butterworth
 Beverly Byron
 Cabin John Memorial VFW Post 5633
 Angela Campbell
 Valerie Campbell
 Nancy E. Canada
 Vasyly W. Zuk and Gloria A. Capik
 Richard and Mitsu Carl
 Sheila Cave
 Richard P. Cember
 Janice and William Cessna
 Jeffrey W. Chaloupek
 Catherine Chatfield
 Brent and Janice Chippendale
 Charles and Barbara Clements
 Paul and Joan Cleveland
 Galen and Sandy Clipp
 Kenneth and Barbara Clopper
 Sheila S. Cochran
 Patricia Coffey
 Margaret and Dan Cogswell
 Alan and Deborah Cohen
 J. David Richardson and Marcia F. Cohn
 Douglas Comer
 Community Foundation of Washington
 County
 David Cosson
 Heather Dawn Coxon
 James and Lise Crafton
 Jill Craig
 Chan Crangle
 Glenn A. Crinnion
 Mercer and Jean Cross
 Brian G. and Joan M. Crowe
 David W. Curfman
 Victoria R. Curtis
 Kurt Hale Cushwa
 Jerome and Patricia Danoff
 Tracey Daschbach
 Allan P. Davis
 Deanna Dawson
 David N. and Linda S. DeBord
 Anne DeNovo
 Lynda DeWitt
 Gary Decker
 Kirsten Denney
 Todd Derr
 Caroline Devine
 John McCabe and Helene Devonshire
 Christian Mulder and Esther Dijkstra
 Sylvia Diss



PHOTO BY LYLE S. OBERKRESER (JUNE WINNER)

Ted Diss
 Lynda Divalentin
 John Dix
 Thomas and Phyllis Dobyns
 Herbert L. and Florence L. Doggett
 Alicia Doherty
 Amy Doll
 Jim Dominick
 Douglass and Frances Donnell
 Cinnamon Dornsife
 David Dorsen
 Robert and Nancy Dove
 Melanie Draper
 Susan Duke
 John Dulmes
 Joe Dunn
 Bailey Edelson
 Jon Edmonds
 Ellen Ericson
 Alan Estevez
 Eddie Farrey
 Kenneth and Diane Feinberg
 Scott and Loretta Feldman
 Jim and Jackie Fesler
 Robert L. and Camille A. Filling
 Nancy L. Finkelstein Family Trust
 Lisa Fish
 Eric Fisher
 Tim and Sarah Fite
 Matthew Fleischer
 Rosemarie Weber and Melinda Ford
 Bryan and Laura Forman
 William and Nancy Foster
 William Raymond Fox
 Steve and Marie France
 Carl E. and Charlotte A. Frasch
 Mark Frick
 Mayo and Pearl Friedlis
 Clifford and Kerstin Gaddy
 Tim and Nancy Galyon
 David and Allison Garman
 Lynda Gattozzi
 Joseph and Mallory Gay
 Caroline C. Gelb

James Gelwicks
 Kenneth George
 Steven and Katrina Gewirz
 Alan C. Gill
 David M. and Maria J. Gillis
 Limja H. Gim
 Barbara Gingrich
 Jefferson Glassie
 Heidi Glatfelter
 Edward Goddard
 William P. Golden
 Carol Goodloe
 Saul Goodman
 Joseph Gorney
 Alan Gourley
 Valerie Gracechild
 James Graeter
 Shawn Graham
 Irene Gray
 Nigel Greene
 Meredith Griggs
 David P. Grum
 David Robert Guinnop
 Anne L. Gunsteens
 Gregory M. Hall
 Wade Hampton
 Elizabeth Handley
 Peter and Debra Hanley
 Lone Hansen
 Timothy Hanser
 Kelvin Hao
 Jonathan Hardis
 Samson Lozier Harman
 Steven Harrison
 Patricia Harvey
 Mary E. Hawkins
 Teresa Head-Gordon
 Michael Edward Heaney
 Peter Heimberg
 Peter Heinlein
 James Hemphill
 William Hendricks
 John R. Hershey, III
 Katherine Hillas

William Hines
 David and Brenda Hollweger
 Spencer Hoopes
 Louise and William Hopewell
 Denise Horner
 Camden and Jayne Hubbard
 Meg Huffaker
 William Hurley
 Stephanie Iacovelli
 InSite Builders, LLC
 JP Morgan Chase Foundation
 Bruce Davis and Evelyn Jacob
 Richard H.F. Jackson
 William James
 Keith and Tari Janssen
 James E. and Barbara Jarboe
 Jewish Federation of Greater Philadelphia
 Carrie Johnson
 Erik R. Johnson
 Nanette C. Johnson
 Althea Johnston
 Margaret Jones
 Judith Kahan
 Warren Kaplan
 Helen E. Karn
 John and Katie Katinas
 John Kean
 Hermina Pfeifer and Gerda Keiswetter
 Barbara Keller
 Jack Kelly
 Millie Kelly
 Patrick Hogan and Charlotte Kelly
 Russell Kennedy
 Carolina Kenrick
 Leigh and Sharon Kessler
 Robert H. Kessler
 John J. and Anne C. Killeen
 Peter and Grace Kimm
 Bonnie Kind
 Henry J., III and Judith G. Koch
 Kathleen Koehler
 Steven Kover
 Robert Kramer
 John Krusberg

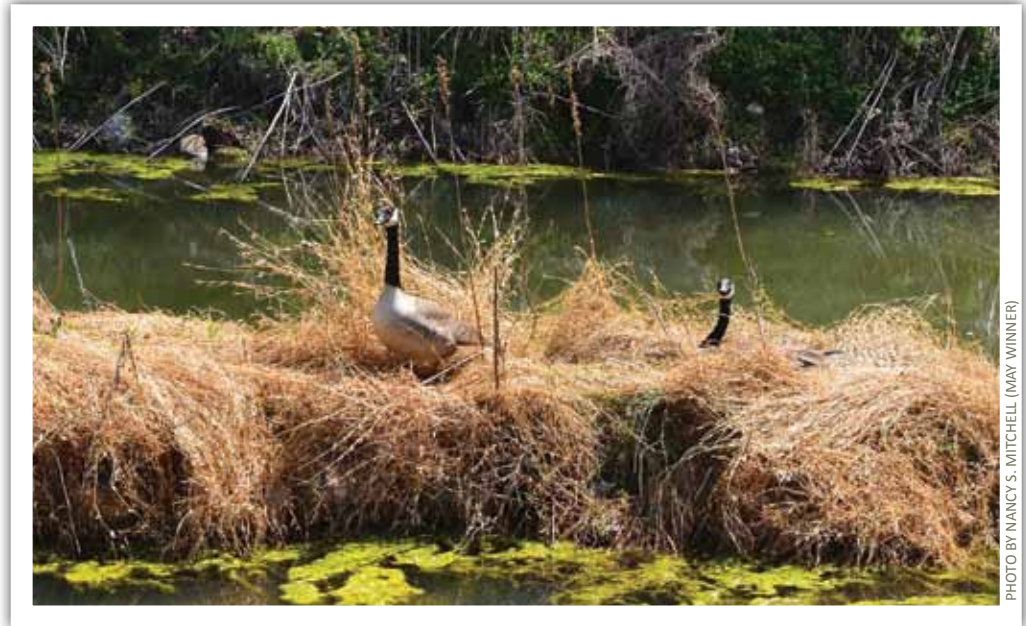


PHOTO BY NANCY S. MITCHELL (MAY WINNER)

Joseph Kuriacose
 John and Ann Kvach
 James T. Yenckel and Sandra L. Lafevre
 Thomas Nardone and Edith Lam
 Phyllis Landry
 Cameron Lane
 Douglas W. and Rebecca Massie Lane
 Neil S. and Ellen D. Lang
 Thomas Lauder
 Julien D. LeBourgeois
 Carol F. Lee
 Joel R. Leininger
 Donald E. and Marjorie A. Lentzen
 Kristal Levine
 Richard and Mary Alice Levine
 Thomas Shaffer and Karen Vander Linde
 Wayne and Vicki Lindgren
 Mark and Sarah Linton
 Eric London
 Christine Lord
 Jeffrey and Fonda Lowe
 Allen Loyd
 Dennis Michael and Pam Lucey

Alison Luchs
 Virginia Luster
 Sarah Madden
 William Inglee and Jane Madden
 Alan Magnuson
 Eifiona Main
 Louis and Edythe Manza
 Sophia Maravell
 Michael and Linda Marmer
 Kent and Ruth Ann Mason
 Stephanie L. Mason
 Henry Roger and Sharon Marlene Mastroni
 Steven and Andrea Matney
 Marilyn Mause
 Harrison and Alice E. McAlpine
 Dennis D. and Diane K. McCarthy
 Alan and Heather McCarty
 Keith I. McConnell
 McCormick & Co., Inc.
 Gretchen McCune
 Mike McDermott
 Molly McDonald
 Peggy McEwan
 William and Diane McGurgan
 David McKibbin
 Donna McMillen
 Dale and Elizabeth Meers
 John D. Meier
 Pete and Sue Mekkelson
 Barry and Susan Merritt
 Cadence Mertz
 Erik and Claire Meyers
 Joseph Kirk Michael
 Franklin and Elizabeth Michels
 Clyde Miller
 Craig and Ilene Miller
 Rebecca A. Miller
 Scott and Lori Miller
 Peter Simpson and Penny Mills
 Phoebe Marie Mills
 Doug and Marilyn Mitchell
 Star Mitchell
 William H. and Jean Atkinson Mitchell
 Elisabeth D. Mohler



PHOTO BY JEFFREY MULLER (OCTOBER WINNER)



PHOTO BY FRAN DOWNNEY (JULY WINNER)

Robert L. Montague, III
 Jean F. Montgomery
 Steve Klein and Sally Moody
 Dward A. Moore
 Judith B. Morenoff
 Dennis E. and Monica Morris
 James F. Morris
 Robert Morrison
 Alan and Karen Moshel
 Allan Moyer and Nancy Kramer Moyer
 Pamela L. Mudd
 Elizabeth Mueller
 Jennifer Mueller
 Leo Muraro
 Tom and Katherine Myers
 Victoria Commins and David Mykita
 Jane Neff
 Carol Nerenberg
 Michael Neumann
 Ronald and Margaret Neumann
 Allen and Kathleen Newcomb
 Susan Newton
 Lori Nicolle
 Karen Nolan
 Michael C. Normile
 Ronald S. and Linda F. Nosalik
 Mia O'Connell
 Jennifer Oehme
 Frederick and Tina Ohly
 John Opitz
 Robert Rotunno and Sabrina Pacifici
 Mark Pankin
 Molly Parker
 Joan G. Paull
 Victoria Pavay
 Julie Pavlin
 Frederick Ambrose and Lou Pearson, III
 Haven Pell
 Daniel and Susan Pereles
 John and Merrily Pierce
 Gerald and Janet Pietsch
 Christine E Pill
 Ron and Patricia Pilling
 J. Richard and Martha Pine

Hunter Pitelka
 David L. and Barbara A. Plume
 Richard W. Pollard
 Geoffrey and Merlyn Prentice
 Michael and Carolyn Prudich
 Melissa Mulreany and Stuart Prymas
 Jonathan Putnam
 Ronald Joseph Pytel
 Carol Randell
 Susan Zweighaft and Richard J. Reed
 John and Terry Reimer
 Kip Reynolds
 Lynn Reynolds
 William and Ines Rhoads
 Ed and Linda Rhodes
 Thomas B. Riford
 River Riders
 Chandler Robbins
 Michael James Rock
 Franklin Rogers
 Elisabeth Rood
 Hillary Rothberg
 Judith Louise Rowe
 Robert J. and Fran A. Rubin
 Zack Russ
 Kenneth Goldman and Barbara Sadick
 Mike Samuelson
 Laurence J. Sauter, Jr.
 Richard and Sue Schiller
 Ezra Marc and Karen Joy Schneider
 David Schreiber
 Richard D. and Geane L. Schubert
 Eric Schweitzer
 Megan Scribner
 Niklaus Salafsky and Julia Segre
 John F. Seitz
 Guy and Dana Semmes
 Blake Biles and Laura Sessums
 Judith Weil Shanks
 Robert Siciliano
 Mickie Simpson
 Martha Sinclair
 Larry B. Slagle
 J. C. Smart

Richard B. Smith
 Steven Snyder
 Lafe E. Solomon
 William and Stacey Sperow
 Sarantes and Deborah Spiliotopoulos
 Elisabeth K. Boas and Arthur B. Spitzer
 W. Cannon Spotswood
 Kevin King and Susan Squires
 Dwane Starlin
 Leonard P. Steuart Foundation
 Edwin and Beverly Stennett
 Bret Leslie and Karen Stern
 James F. Stickney
 Lee and Pat Stine
 Stone Ridge School of the Sacred Heart
 Craig Stone
 Hugh Robinson and Marilyn Stone
 Grace A. Stover
 Christopher Stubbs
 John H. Sturc
 Philip and Margot Sunshine
 Richard Swartzlander
 John and Charolette Sweet
 Jascha Swisher
 Allen and Cheryl Swope
 Donald L. and Christine H. Sylvester
 Christopher Tai
 Eva M. Tank-Nielsen
 Charles Taylor
 Nancy Taylor
 Timothy B. Taylor
 John Tobe
 Ann Tompkins
 David S. C. Chu and Laura L. Tosi
 Rachel and Kenneth Towbin
 Kenneth and Teresa Troxell
 Ron Trumper
 Arthur Tsien
 Lois Claxton Turco
 William Lewis Turner, Jr.
 Lucy Uncu
 United Health Group
 Dilawar and Lois Uthman
 Rob Bannister and Ryan Valdez
 Osborne and Betty Wachter
 David and JoAnn Wahl
 Diana Wahl
 Mark and Kristen Waksberg
 John Kern and Pamela Walker
 Hilary Walsh
 Robert R. and Nadja Ward
 David and Debora Warrenfeltz
 Ronald Watkins
 Chris Weaver
 Kenneth A. Webb
 Carl Weichel
 Charles and Jackie Weidenfeller
 David Byron Smith, Jr. and Ilene T. Weinreich
 G. M. Wentz
 Jeffrey M. Werthan
 Robert A. Westgate
 Susan and Michael Whalton
 Anne Whatley
 Dennis White
 Jeffrey Owen White

Masako White
 Lisa White-Hoxie
 Linda White-Weaver
 David and Tyler Whitmore
 Marvin Wilke
 Joseph Lipscomb and Laura Will
 Timothy and Alba Williams
 Malcolm Wilson
 Ronald Wilson
 James W. and Susan E. Wolfe
 Corey Wright
 Margaret Wright
 George Wyeth and Julie Greenberg
 Thomas Youhn
 Steven and Ina Zimmerman

HONORARIUM

In honor of Boy Scout Troop 50, Newark, DE
 David Guinnup
In honor of Linda Collyer
 Matthew Fleischer
In honor of Janet M. Cornelius
 Ellen Ericson
In honor of Mr. and Mrs. John Fondersmith
 Stephanie Iacovelli
In honor of Ian and Jessica Gingold
 Christine Pill
In honor of Joe Hage and Mary Kearney
 Caroline Gelb
In honor of Elisabeth A. Handley
 Samson Harman
In honor of Anna Kelly
 Lynda DeWitt
In honor of Henry Mastroni
 Henry and Sharon Mastroni
In honor of Michael C. Mitchell
 Joe Dunn
 John Euler
 Jeffrey Werthan
In honor of Michael Mitchell for his tireless service to the C&O Canal Park
 Jack and Julie Koczela

In honor of Jane Neff
 Becky Curtis
In honor of Bernie Patlen's 90th birthday
 Kristal Levine
In honor of Peter the C&O Bike Patrol person who fixed my flat bike tire
 Ronald Watkins
In honor of Caroline Russell
 Corey Wright
In honor of Walter Stone
 Craig Stone
In honor of the person(s) who left a big pile of litter as well as their wallet on the towpath last Friday night
 Janine Borofka
In honor of the Walsh and Coxon Families
 Hilary Walsh

IN MEMORIAL

In memory of Robert Joseph Anderson, Jr.
 Joseph Kirk Michael
In memory of Robin Crangle
 Chan Crangle
In memory of Michael Porter Denker
 Guy and Dana Semmes
In memory of Lawrence A. Claxton
 Lois Turco
In memory of James E. Curfman
 David Curfman
In memory of Cora Hoopes
 Spencer Hoopes
In memory of Derek Horton
 Heather Coxen
In memory of William H. Justice, who loved the canal
 William Justice
In memory of Celia Kramer
 Robert Kramer
In memory of Joseph C. Llewellyn
 Henry J. Koch, III and Judith G. Koch
In memory of Annie Meadows
 Dennis White

In memory of Edward Morenoff
 Judith Morenoff
In memory of Hans Muller
 John Muller
In memory of Susan Diane Neumann
 Michael Neumann
In memory of Michael C. Normile
 Anonymous
 William Hurley
 Richard and Sue Schiller
In memory of Jennie and Mason Payne
 Jennifer Oehme
In memory of John Q. Rounsaville, Jr.
 Mary Austin
 David N. and Linda S. DeBord
 Insite Builders, LLC
 Thomas Lauder
 Carol F. Lee
 Mr. & Mrs. Linton
 Dennis and Pam Lucey
 Rebecca A. Miller
 Jennifer Mueller
 Haven Pell
 Marcia Rounsaville
 Hilary Rothberg
 Anne Whatley
In memory of Donald and Eva L. Rowe
 Judith Rowe
In memory of James Showers
 Richard Smith
In memory of Gloria E. White
 Linda White-Weaver
In memory of Wussie, Silverado, Pretty Kitty and Diamond
 Jane Neff

PARK AFTER DARK SPONSORS

The J. Willard and Alice S. Marriott Foundation
 Bernstein Family Foundation
 Minkoff Development Corporation
 Quality Systems and Products, LLC
 Anthony Wilder Design/Build, Inc.
 Cabin John Citizens Association
 David and Page Dekker
 Friends of Historic Great Falls Tavern
 Knight Austin and Ann M. Kiplinger
 KPMG, LLP
 Peter Bross
 Robin and Mike Zanotti

IN-KIND

Firehook Bakery
 HBP, Inc.

WORKPLACE

EarthShare
 America's Charities
 United Way of the Eastern Panhandle



PHOTO BY ALISHA ANDERSON (AUGUST WINNER)



C&O CANAL TRUST
1850 DUAL HIGHWAY, SUITE 100
HAGERSTOWN, MD 21740



SUPPORT THE TRUST

Make a gift that will help protect, restore, and promote the extraordinary resources of the C&O Canal National Historical Park by visiting www.CanalTrust.org today!

'Tis the Season!



Looking for a unique gift for the person who has everything?

Give a Canal Quarters
Gift Certificate

www.CanalTrust.org/shop

The C&O Canal Trust is a 501(c)(3) organization, donations to which are tax-deductible to the fullest extent of the law. A copy of the current financial statement of the C&O Canal Trust is available by writing 1850 Dual Highway, Suite 100, Hagerstown, MD 21740 or by calling 301-714-2233. Maryland Residents: Documents and information submitted under the Maryland Charitable Solicitations Act are also available, for the cost of postage and copies, from the Maryland Secretary of State, State House, Annapolis, Maryland 21401. Virginia Residents: A financial statement is available from the State Office of Consumer Affairs in the Department of Agriculture and Consumer Services, P.O. Box 1163, Richmond, VA, 23218.



THE CANAL QUARTERLY IS PRINTED ON 50% POST-CONSUMER RECYCLED PAPER